



## ICSCC MEMO #3 MAY 2016

*The Official Publication of the  
International Conference of Sports Car Clubs*

### IN THIS ISSUE:

2016 Race Schedule, 2016 Northwest Mini Enduro  
Championship Series, IRDC & CSCC Race Announcements,  
Messages from the President & the Steward



### FROM THE PRESIDENT

When you read my last memo article you could have calculated how far in advance these are written before the memo is actually published and you get to read them. It's still a week away from the spring enduro for me, assuming IRDC manages to staff the race official positions so we can hold a race, but for you the enduro and its staffing issues are old news and CSCC is either just about to hold the first championship race at PIR or it is also history. So what am I to talk about?

My spec engine is still in pieces, my taxes aren't done, the crops aren't planted, my race car trailer is full of my nephew's furniture, and my new garage is not finished. But I have a plan, so hopefully by the time you read this, my spec engine will be in my car, the car will be in my trailer, my taxes will be done (or extension filed), and all the crops will be in ground and have soaked up a few April showers. The garage is still not done, but getting closer.

I don't have a plan that ensures we can actually hold all the races we have on the schedule. Our drivers fund our conference and clubs but the race officials (aka workers) enable everything we do. We are in danger of not being able to hold events due to not being able to adequately staff the events. As I stated in my first article, I am amazed that so many would volunteer so I could have so much fun. Our volunteers are really not ours, they have many demands placed on them and we are lucky when they choose to join us and enable our events to be

staged. We may be approaching a time when we need to find ways to augment our seasoned race officials. Does each driver need to accumulate xx hrs of "worker time" in order to race? Do we need to cut our race schedule to 2 races per club instead of 3? At a minimum each driver should let each volunteer you see know how much you appreciate them choosing to be at the event and spending their time with you.

Hopefully I already saw you at the track.  
Bye for now

Mike Tripp

ICSCC President



*Note from the Licence Director  
drivers who have not renewed for this  
year, that this will be your last Memo!*

## 2016 ICSCC EVENT SCHEDULE

Date	Track	Club
<i>Championship Race Events</i>		
April 30/May 1	(rotn 4) Portland International Raceway	CSCC
May 14/15	(rotn 5) Pacific Raceways	IRDC
June 4/5	(rotn 6) Portland International Raceway	CSCC
June 17/18/19	(rotn 1/2/3) Spokane County Raceway (triple race)	NWMS
July 9/10	(rotn 4/5) Mission Raceway Park (double race)	SCCBC
July 23/24	(rotn 6) Pacific Raceways	IRDC
August 20/21	(rotn 1) Portland International Raceway	CSCC
Sept 3/4	(rotn 2/3) Oregon Raceway Park (double race)	TC
Sept. 17/18	(rotn 4) The Ridge	IRDC
<i>Endurance Events</i>		
April 17	The Ridge	IRDC
October 15	Portland International Raceway	CSCC
<i>Driving Schools</i>		
March 12	Portland International Raceway	CSCC
March 19/20	Oregon Raceway Park	TC
March 20	Mission Raceway Park	SCCBC
April 16	The Ridge	IRDC
April 29	Portland International Raceway	CSCC
May 13	Pacific Raceways	IRDC
June 3	Portland International Raceway	CSCC
June 25/26	Mission Raceway Park	SCCBC
August 19	Portland International Raceway	CSCC
Oct 1	Portland International Raceway	CSCC
<i>ICSCC Awards Banquet &amp; Fall Meeting</i>		



### STEWARDS' CORNER

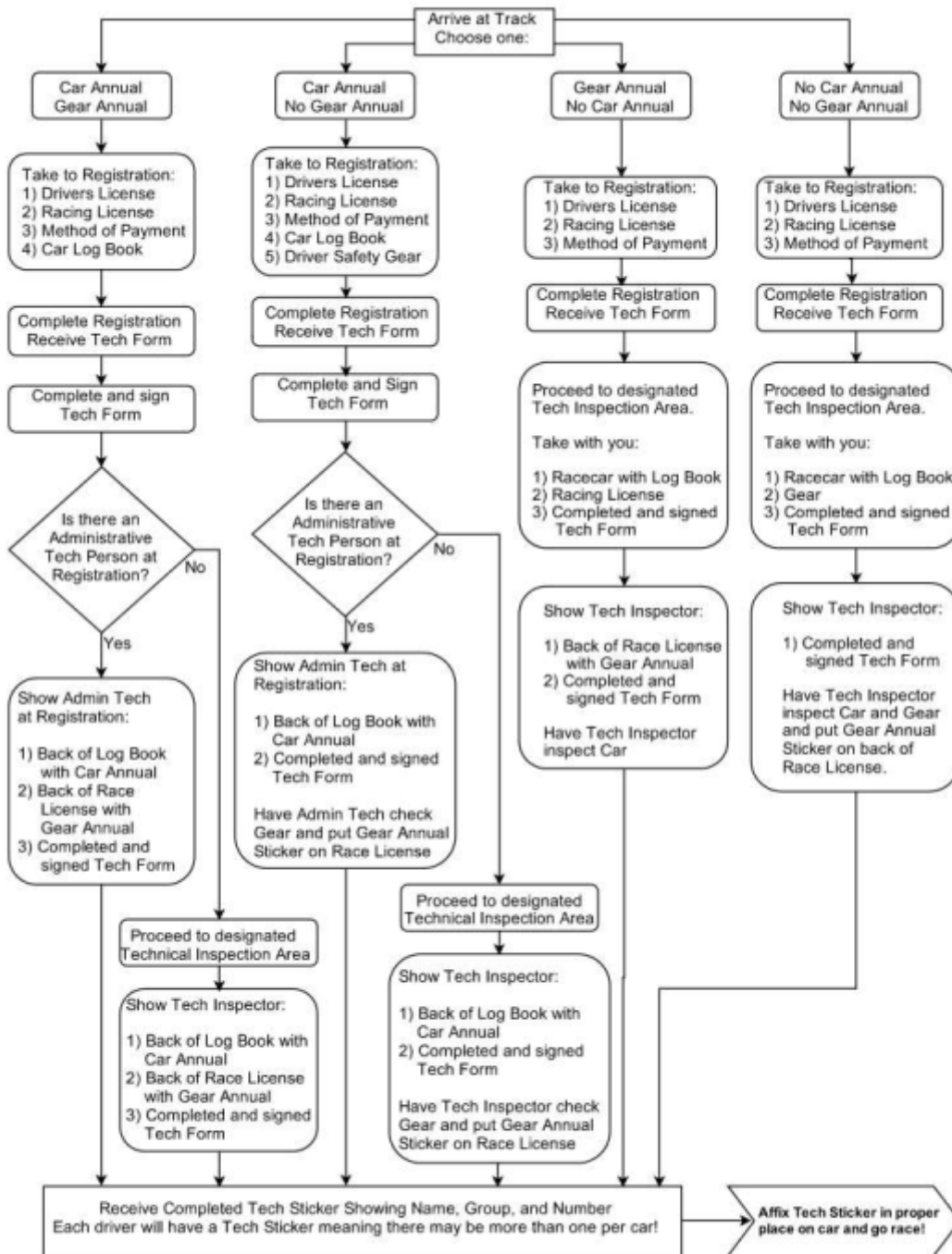
It's April already as I write this and the IRDC Enduro will be in the record books by the time you read this but for me it still hasn't happened. As a result I have no actual racing to talk about so I thought maybe this would be a good time to help guide you to getting on-track a little easier with ICSCC's revised registration and tech procedures. Separate annual tech inspections are now available for cars and safety gear so hopefully this flow chart will help guide you through the streamlined process.

Looking forward to seeing you all (socially, not because of behavior related issues!) at the track.

Rick Bostrom  
2016 ICSCC Race Steward



photos by Gerry Frechette



photos by Gerry Frechette

# ICSCC OFFICIALS 2016

Please respect our volunteers-no calls or faxes after 9pm

President	Mike Tripp	5477 Beach Bluff Dr	Freeland, WA 98249	Tel: 503-367-2452
Email:	president@icscc.com			
Vice President	David Bennitt	14023 Bear Creek Rd. NE	Woodinville, WA 98077	Tel: 425-869-2868
Email:	vice_president2@icscc.com			
Vice President	Linda Heinrich	P.O. Box 1977	North Plains, OR 97133-1977	Tel: 503-647-5399 Fax: 503-647-5389
Email:	vice_president@icscc.com			
Treasurer	Dan Heinrich	P.O. Box 1977	North Plains, OR 97133-1977	Tel: 503-647-5399 Fax: 503-647-5389
Email:	treasurer@icscc.com			
License Director	Wes Hill	PO Box 3314	Bellevue, WA 98009	Tel: : 206-769-9516
Email:	license_director@icscc.com			
Secretary	Lynn Coupland	5670 SW Menefee Dr.	Portland, OR 97239	Tel: 503-246-3511 Cell: 503-701-3547
Email:	secretary@icscc.com			
Race Steward	Rick Bostrom	2909 N. 13th Street	Tacoma WA 98406	Tel: 253-298-8465
Email:	steward@icscc.com			
Assistant Race Steward		to be advised		
Assistant Race Steward #2	Dan Heinrich	P.O. Box 1977	North Plains, OR 97133-1977	Tel: 503-647-5399 Fax: 503-647-5389
Email:	asst_steward2@icscc.com			
License Registrar	Linda Heinrich	P.O. Box 1977	North Plains, OR 97133-1977	Tel: 503-647-5399 Fax: 503-647-5389
Email:	license_registrar@icscc.com			
Public Relations	Scott Faris	5015 Denton Drive	Lake Oswego, OR 97035	Tel: 503-639-6660
Email:	pr@icscc.com			
Points Keeper	Charles Hurley	16025 Cascade Lane SE	Monroe, WA 98272	Tel: 206-353-7854
Email:	points@icscc.com			
ROD	Ann Peters	10952 McAdam Road	Delta, BC, BC Canada	Tel: 604-581-7189
Email:	rod_director@icscc.com			
Insurance Advisor	David Bennitt	14023 Bear Creek Rd. NE	Woodinville, WA 98077	Tel: 425-869-2868
Email:	insurance@icscc.com			
Historian	Gerry Frechette	2355 W 7th Avenue	Van., BC V6K 1Y4 Canada	Tel/Fax: 604-734-4721
Email:	historian@icscc.com			
Sound Control		T.B.A.		
Legal Advisor	Charles Denkers	4208 SE Harrison	Milwaukie, OR 97222	Tel: 503-222-6102 (work)
Email:	denkersc@gmail.com			
Medical Officer	Doug Jennings	467 Solnae Place NW	Bremerton, WA 98311	Tel: 360-692-6244
Email:	medical@icscc.com			
Banquet Facilitator	Jen Higinbotham			
Banquet Support	Kristi Bennitt	14023 Bear Creek Rd .NE	Woodinville, WA 98077	Tel: 425-869-2868
Email:	banquet2@icscc.com			
Charge D'Affaires	Dick Boggs	13749 97th Ave NE	Kirkland, WA 98034	Tel: 425-823-4883 (evenings)
Email:				



# 2016 NORTHWEST MINI ENDURO CHAMPIONSHIP SERIES

<b>What is it:</b> Eleven race series:		<u>DATE</u>	<u>TRACK</u>
	Round 1	4/17/16	The Ridge (2 Hour & double points)
	Round 2	4/30/16	PIR
	Round 3	5/14/16	PR
	Round 4	6/4/16	PIR
	Round 5	6/17/16	SCR
	Round 6	6/18/16	SCR
	Round 7	7/23/16	PR
	Round 8	8/20/16	PIR
	Round 9	9/3/16	ORP
	Round 10	9/17/16	The Ridge
	Round 11	10/15/16	PIR (2 Hour & double points)

Races are one hour in length except for the first race and the final race which are two hours and count for double points. (time does not stop for black flags or red flags)

Top 7 races count towards the points championship. Must enter a minimum of five races in order to qualify for the championship.

Each one hour entry shall consist of one or two drivers. Each two hour entry may have no more than four drivers. Drivers may drive in up to two cars per race.

Each one hour race will require a mandatory 60 second pit stop. Each two hour race will require a mandatory two minute pit stop.

Entry fee, qualifying procedure, etc. will be determined by sponsoring club and may be different between events.

**Classes:** **ME0** – AP, SPO, SPM, GT1, GT2, GT3, ITE, ST  
**ME1** – BP, EIP, FIP, GTL, RS, AS, SE46, SPU  
**ME2** – CP, DP, PRO3, ITS, PRO44, HIP  
**ME3** – EP, FP, GP, HP, IP, CR, PRO7, SM, CSM, HT, ITA, ITB, ITC

Car numbers will be assigned on a first come, first served basis.

**Points:** 1<sup>st</sup> – 12, 2<sup>nd</sup> – 10, 3<sup>rd</sup> – 9, 4<sup>th</sup> – 8, 5<sup>th</sup> – 7, 6<sup>th</sup> – 6, 7<sup>th</sup> – 5, 8<sup>th</sup> – 4, 9<sup>th</sup> – 3, 10<sup>th</sup> & lower – 2, Pole – 1 (where applicable / No pole points for 2 hour races). All positions are scored except as noted: DNF/DNS score a maximum of 6<sup>th</sup> place points. Number of laps completed will determine position for DNF's. All DNS's score the same number of points based on the number of cars in class.

Championship trophies will be awarded to class champions in classes that average .75 entries.

Championship trophies will be awarded to the top 3 in classes that average 5 entries.

**Eligibility:** Licenses – ICSCC IRR, SCCA, CACC, FIA, ASN, or NASA. All other licenses must be approved by the ICSCC License Director. Novice license holders are not eligible.

This championship series is a great way to get in more racing over the course of the weekend. Race in the series for the championship or race in it to do more racing, either way it is a great opportunity to maximize your track time for the race weekend!

**FULL SET OF RULES:**

Entry to this race does **not** have to be in conjunction with any other race(s) of the weekend.

Except as noted, the 2016 ICSCC Competition Regulations will apply.

Each entry shall consist of either one or two drivers for the one hour races, and no more than four drivers for the two hour races. Drivers may drive in up to two cars per race.

Car numbers will be assigned on a first come, first served basis.

**Points:** See above (page 1) for point structure. Each driver will receive the same points whether an entry is one or multiple drivers. Example: If a one driver entry wins – 12 points are awarded. If a two driver entry wins – 12 points are awarded to each driver. Pole points will be awarded to both drivers. If a driver drives in two different cars in the same race, they will only receive points for the higher finish if the two cars are in the same class. If the two cars are in different classes, the driver will receive points for both classes. The Series Championship (each class) will be determined by adding a drivers seven highest point totals together. Ties in final points shall be resolved on the basis of each driver's record of first place finishes; then, if necessary, second place finishes. If two or more drivers have accumulated the same number of first and second place finishes, they shall be considered tied for the Championship. If for example two drivers tie for the Championship, the next driver shall be considered to have finished in third place.

\*\*Championship points standings available at [www.cascadesportscarclub.org](http://www.cascadesportscarclub.org) and [www.icsc.com](http://www.icsc.com) \*\*

**Mandatory Pit Stop:** Each race will have a mandatory 60 second pit stop to be made between the 20 minute mark and the 40 minute mark of the race for both one driver and two driver entries. Pit stops may be made before or after the mandatory pit stop window, but will not count towards the mandatory pit stop. A driver change and/or refueling may take place during the mandatory pit stop. The cars ignition must be turned off while refueling and/or a driver change is taking place. All crew members that have the potential to come into direct contact with gasoline or gasoline vapors during pit stops are required to wear the following safety gear: A fire suit, fire resistant gloves, head sock, and helmet. A fire bottle designee is also required in case of a fire; however, is not required to wear the same safety gear. No contact with the car is allowed while refueling is going on except for a driver change. Helping a driver get belted in, radios plugged in, and cleaning the front windshield are not considered contact with the car and may occur at the time of refueling if necessary. Pit crew attire – Arms, legs, and feet shall be fully covered. **Note:** Each of the two hour races have a two minute mandatory pit stop to be made between the 30 minute mark and the 90 minute mark of the race. See club supps for more info.

The Pit lane speed limit and zones shall be determined by the sponsoring club. One crew member is allowed over the wall to signal the car into their pit space. During a Full Course Yellow (FCY), pit lane will be closed. If you are in pit lane at the time of a FCY, you will be released to rejoin the field. Pit lane will not re-open until the entire field has passed start/finish after the re-start of the race. If a FCY or Black/Red flag extends past the mandatory pit window, two green flag laps will be added to the pit window. The clock will continue to run under race stoppage.

## 2016 NORTHWEST MINI ENDURO CHAMPIONSHIP SERIES con'td

If during the race, a car returns to the paddock, or has to be towed in, they will have been considered to have withdrawn from the race and will not be permitted to re-enter the track. This rule does not apply to the 2 hr.

**Minimum Penalties:** Pit lane speed violation, fuel spillage over 1 liter – Stop & Go. Improper attire on crew members over the wall, no fire bottle designee – Penalty Box: 30 seconds. Working on car during re-fueling – Penalty Box: 1 minute. Mandatory pit stop window violation: 2 minute penalty (1 hour races), 3 minute penalty (2 hour races). All others – Warning

**Trophies:** One or two in class – 1<sup>st</sup> only; three to five in class – 1<sup>st</sup> & 2<sup>nd</sup>; six or more – 1<sup>st</sup>, 2<sup>nd</sup>, 3<sup>rd</sup>

**MANDATORY DRIVERS MEETING – See schedule. Failure to attend may result in starting at the rear of the field.**

**Each sponsoring club is responsible for setting the qualifying procedure.**

### QUALIFYING PROCEDURES

**ROUND 1 – APRIL 17, 2016:** 15 minute qualifying session. The starting grid shall be set fastest to slowest.  
(DOUBLE POINTS) No pole points.

**ROUND 2 – APRIL 30, 2016:** Pressure qualifying. Either driver may qualify. Qualifying shall consist of one Green flag lap (one out lap and one green flag lap). Qualifying order shall be set based on practice times – fastest first to slowest last. The starting grid shall be set fastest to slowest.

**ROUND 3 – MAY 14, 2016:** 15 minute qualifying session. The starting grid shall be set fastest to slowest.

**ROUND 4 – JUNE 4, 2016:** 10 minute qualifying session. The starting grid shall be set fastest to slowest.

**ROUND 5 – JUNE 17, 2016:** 10 minute qualifying session. The starting grid shall be set fastest to slowest.

**ROUND 6 – JUNE 18, 2016:** 10 minute qualifying session. The starting grid shall be set fastest to slowest.

**ROUND 7 – JULY 23, 2016 :** 15 minute qualifying session. The starting grid shall be set fastest to slowest.

**ROUND 8 – AUGUST 20, 2016:** 10 minute qualifying session. The starting grid shall be set fastest to slowest.

**ROUND 9 – SEPTEMBER 3, 2016:** 15 min. qual. session. The starting grid shall be set fastest to slowest.

**ROUND 10 – SEPTEMBER 17, 2016:** 15 min. qual. session. The starting grid shall be set fastest to slowest.

**ROUND 11 – OCTOBER 15, 2016:** The starting grid shall be set fastest to slowest based on practice times.  
(DOUBLE POINTS) No pole points.



The **INTERNATIONAL RACE DRIVERS CLUB**  
Presents the 11<sup>th</sup> annual



Plus, Round 3 of the  
**Northwest Mini Enduro Championship Series**  
**Pacific Raceways, May 14<sup>th</sup> & 15<sup>th</sup>, 2016**

These events are hosted by the International Race Drivers Club at Pacific Raceways under sanction of the International Conference of Sports Car Clubs, governed by 2016 ICSCC Competition Regulations.

ENTRIES OPEN:  
ENTRY FORMS:  
ONLINE REGISTRATION:

Upon receipt of this announcement  
[www.icsc.com](http://www.icsc.com)  
[www.motorsportsreg.com](http://www.motorsportsreg.com)

ENTRY FEES:

IRDC members	\$275
Non-IRDC licenses	\$290
Additional Race Groups	\$150
Round 7 NWMECS, a special race event one hour Mini-Enduro	\$150
Friday Test & Tune	\$180
Spectators and Crew members	FREE + Our Thanks!

Preferred payment method is cash or check, by mail or in person at sign in. Please help our club save on credit card fees. Motorsportsreg will not charge your credit card until you have completed tech and have an official entry.

IRDC REGISTRAR: Kristi Bennitt tel 425-864-5412 [kbennitt@gmail.com](mailto:kbennitt@gmail.com)  
14023 Bear Creek Rd. NE Woodinville, WA 98077

RACE ELIGIBILITY:

All drivers 18 years old and over with a valid unrestricted competition license issued by ICSCC, SCCA, CACC, FIA, ASN, or NASA. Other licenses may be approved by the ICSCC License Director.

The Race Chairman Colin Koehler can be reached at 206-227-0273 or [irdcracechair@outlook.com](mailto:irdcracechair@outlook.com)

FRIDAY TEST AND TUNE:

Race car test and tune event, rotating groups. Novice license holders authorized by the ICSCC License Director are welcome. Paddock entry restricted to participants, officials and volunteers until 4pm.

TECHNICAL INSPECTION:

Entries with a 2016 Annual Tech sticker on your logbook can complete your race tech form at registration and receive your weekend tech sticker then and there and be good to go. Drivers without 2016 Annuals must have your car and apparel inspected by an authorized tech official. Tech officials will be roaming Friday evening, or bring your car and gear to the scale station area for inspection.





## Saturday – May 14, 2016

7:30am - 11:30am	4 hrs.	Registration open
7:30am - 11:30am	4 hrs.	Technical Inspection
8:00am - 8:30am	30 mins.	Novice Track Tour/Orientation
8:40am - 9:30am	50 mins.	<b>Mandatory Novice Meeting</b>
9:05am - 9:20am	15 mins.	Group 5 – Qualifying, Round #1
9:28am - 9:43am	15 mins.	Group 6 – Qualifying, Round #1
9:51am - 10:06am	15 mins.	Group 1 – Qualifying, Round #1
10:14am - 10:29am	15 mins.	Group 2 – Qualifying, Round #1
10:37am - 10:52am	15 mins.	Group 3 – Qualifying, Round #1
11:00am - 11:15am	15 mins.	Group 4 – Qualifying, Round #1
11:23am - 11:38am	15 mins.	Novice Closed Wheel – Practice
11:46am - 12:00pm	14 mins.	Group 8 - NWMECS Round #3 – Race Qualifying
12:00pm - 12:45pm	45 mins.	Lunch
12:10pm - 12:30pm	20 mins.	<b>Mandatory Drivers Meeting – Grandstands</b>
12:45pm - 1:00pm	15 mins.	Novice Closed Wheel – Race Qualifying
1:08pm - 1:28pm	20 mins.	Group 5 – Non-points Sprint Race
1:36pm - 1:56pm	20 mins.	Group 6 – Non-points Sprint Race
2:04pm - 2:24pm	20 mins.	Group 1 – Non-points Sprint Race
2:32pm - 2:52pm	20 mins.	Group 2 – Non-points Sprint Race
3:00pm - 3:20pm	20 mins.	Group 3 – Non-points Sprint Race
3:00pm – 3:30pm	30 mins.	<b>Mandatory Novice Pre-Race Briefing</b>
3:28pm - 3:48pm	20 mins.	Group 4 – Non-points Sprint Race
3:40pm		Senior observers to Pre-Grid area
4:00pm - 4:30pm	30 mins.	Novice Closed Wheel Race
4:45pm - 5:45pm	1 hr.	Group 8 - NWMECS Round #3 Race
5:00pm		<b>Novice Post-Race Meeting</b>
5:50pm		Track clean up

Group 1 = A-B-C Prod, SPO-M-U, PRO-3

Group 2 = D-E-F-G-H-I Prod, CR, PRO-7, HT, SM, CSM, PRO44, ITX

Group 3 = CF, FF, FA, FM, FC, FBX, SRX

Group 4 = GT1-2-3, AS, ITE, RS, ST, SE46

Group 5 = ITA-B-C-S, GTL, E-F-H Imp Prod

Group 6 = FV, FFF/500, FL, FLX, S2, B-C-D-E-F SR & Novice Open Wheel

Group 7 = Novice Closed Wheel

Group 8 = Northwest Mini Enduro Championship Series - NWMECS



## Sunday – May 15, 2016

7:30am - 10:00am	2.5 hrs.	Registration open
7:30am - 10:00am	2.5 hrs.	Technical Inspection
9:15am - 9:30am	15 mins.	Group 5 – Qualifying, Round #2
9:40am - 9:55am	15 mins.	Group 6 – Qualifying, Round #2
10:05am - 10:20am	15 mins.	Group 1 – Qualifying, Round #2
10:30am - 10:45am	15 mins.	Group 2 – Qualifying, Round #2
10:55am - 11:10am	15 mins.	Group 3 – Qualifying, Round #2
11:20am - 11:35am	15 mins.	Group 4 – Qualifying, Round #2
11:35am - 12:35pm	1 hr.	Lunch
11:45am - 12:15pm	30 mins.	<b>Mandatory Drivers Meeting – Grandstands</b>
12:45pm - 1:15pm	30 mins.	Group 5 – Championship Race
1:25pm - 1:55pm	30 mins.	Group 6 – Championship Race
2:05pm - 2:35pm	30 mins.	Group 1 – Championship Race
2:45pm – 2:55pm	10 mins	Track Clean Up
3:00pm - 3:30pm	30 mins.	Group 2 – Championship Race
3:40pm - 4:10pm	30 mins.	Group 3 – Championship Race
4:20pm - 4:50pm	30 mins.	Group 4 – Championship Race

Group 1 = A-B-C Prod, SPO-M-U, PRO-3

Group 2 = D-E-F-G-H-I Prod, CR, PRO-7, HT, SM, CSM, PRO44, ITX

Group 3 = CF, FF, FA, FM, FC, FBX, SRX

Group 4 = GT1-2-3, AS, ITE, RS, ST, SE46

Group 5 = ITA-B-C-S, GTL, E-F-H Imp Prod

Group 6 = FV, FFF/500, FL, FLX, S2, B-C-D-E-F SR & Novice Open Wheel

Group 7 = Novice Closed Wheel

Group 8 = Northwest Mini Enduro Championship Series - NWMECS

## International Race Drivers Club Supplemental Regulations – Pacific Raceways

1. The event is open to race cars meeting current year ICSCC competition regulations.
2. The event is organized according to current year ICSCC competition regulations. All persons entering the event and/or Pacific Raceways property are subject to current year ICSCC competition regulations.
3. All persons entering Pacific Raceways property must sign in on the event waiver document at the main gate and wear the provided wristband at all times. An additional minor release form is required for all persons under 18 years old. IRDC reserves the right to refuse entry to any person for any reason without explanation.
4. Minors must be under the direct supervision of a responsible adult at all times. Minors are not permitted at any time in any "hot" area.
5. Persons under 16 years old may not use any kind of wheeled transportation on Pacific Raceways property, including but not limited to bicycles, scooters, motorcycles, skateboards, skates, etc...
6. The paddock area entrance road gates may be locked between the hours of 11:00 pm and 7:00 am.
7. There is no parking permitted along the paddock entrance road, or along the fence line at the north edge of the paddock. This is a defined fire lane, any vehicles parked there will be immediately towed with no notice.
8. 5 mph speed limit in the paddock.
9. Pets are welcome, but must be leashed at all times and please clean up after your animal.
10. One support vehicle or trailer per race car in the paddock.
11. Authorized vehicles only on the race course at any time. No motorized vehicles of any kind permitted at any time on the race course without permission or authorization from ICSCC officials.
12. No race car engines running before 9:00 am or after 7:00 pm. Quiet hours are from 10:00 pm to 7:00 am. Please respect and be considerate of the neighbors to preserve our future ability to hold events at Pacific Raceways.
13. ICSCC event noise rule 1112 is in effect at all times. 103.0 dB @ 50 feet. No exceptions.
14. Positively no dumping of oil or other hazardous substances on Pacific Raceways property. Anyone doing so will be charged with all mitigation costs, could possibly be criminally charged, and will absolutely be permanently banned from all IRDC events.
15. Any damage to Pacific Raceways property and or facilities, including but not limited to the track, barriers, fencing, buildings, etc..., regardless of cause, whether accidental or intentional, will be billed to the responsible person. Likewise any damage to equipment or devices provided by ICSCC or IRDC regardless of cause will also be billed to the responsible person.
16. No open fires permitted.
17. Race car traffic only on the pre-grid access road adjacent to the front straight. No street cars, pedestrians, bicycles, etc...
18. No motorized tow or support vehicles are permitted on pre-grid, unless specifically authorized in advance by the Grid Marshall or Race Chairman. Please park support vehicles behind the pre-grid area along the fence line.
19. The "5 minute warning" on pre-grid will be given at approximately 9 minutes prior to the actual race start time.
20. No refueling on the grid without a dedicated person at the ready with a suitable fire extinguisher.
21. The Turn 1 blend line is in effect. Violations are subject to penalty.
22. Should you happen to use the turn 3A escape road, you are required to stop completely at the end of the escape road where it re-joins the circuit and wait until released safely into traffic by the turn station officials at turn 4. There will be a minimum 10 second hold to adjust for the time gained by shortcutting the circuit, but the wait may be longer until a safe opening in traffic occurs, which will be at the sole discretion of the turn station official.
23. The race schedule may be altered by the Race Chairman due to emergency conditions.
24. Consumption of alcoholic beverages is not permitted at any time during the racing event, and governed by permit conditions during the times when racing events are concluded.
25. No race class changes after 1:00 pm on Saturday afternoon.
26. The authorized location for timing beacons/devices is in the gated area east of the walkway to the turn 9 grandstands. No other locations are permitted, timing equipment placed outside of the authorized area will be confiscated.
27. Requests for split or staggered starts for championship points events must be submitted to the Race Steward by 5:00 pm Saturday.
28. Overnight camping on Pacific Raceways property Sunday night requires permission from track management.

# Test and Tune - Friday May 13, 2016



## Notes

**\*\*\*No race engines before 9:00am.\*\*\***

Full safety gear/apparel required – no exceptions.

Enter and Exit the circuit at Turn 8.

The session checkered flag will be shown at Turn 4. Please exit the circuit directly, take no cool down lap. A quick transition will permit many sessions for everyone.

Any incidents causing time loss will be assessed to the subsequent applicable run group to stay on strict schedule.

Closed Wheel Small Bore (SB) = 2500cc & under

Closed Wheel Big Bore (BB) = 2500cc & over

7:30am - 10:30am	3 hrs.	Registration open – TNT, Race Weekend
8:00am - 8:30am	30 mins.	<b>Mandatory Drivers Meeting - meet near Proformance building</b>
9:00am - 9:20am	20 mins.	Open Wheel & Sports Racer, session #1
9:20am - 9:40am	20 mins.	Closed Wheel Small Bore, session #1
9:40am - 10:00am	20 mins.	Closed Wheel Big Bore, session #1
10:00am - 10:20am	20 mins.	OW & SR, session #2
10:20am - 10:40am	20 mins.	CW SB, session #2
10:40am - 11:00am	20 mins.	CW BB, session #2
11:00am - 11:20am	20 mins.	OW & SR, session #3
11:20am - 11:40am	20 mins.	CW SB, session #3
11:40am - 12:00pm	20 mins.	CW BB, session #3
12:00pm - 1:00pm	1 hr.	Lunch
1:00pm - 1:20pm	20 mins.	OW & SR, session #4
1:20pm - 1:40pm	20 mins.	CW SB, session #4
1:40pm - 2:00pm	20 mins.	CW BB, session #4
2:00pm - 2:20pm	20 mins.	OW & SR, session #5
2:20pm - 2:40pm	20 mins.	CW SB, session #5
2:40pm - 3:00pm	20 mins.	CW BB, session #5
3:00pm - 3:20pm	20 mins.	OW & SR, session #6
3:20pm - 3:40pm	20 mins.	CW SB, session #6
3:40pm - 4:00pm	20 mins.	CW BB, session #6
4:00pm		Track clean up
5:00pm - 7:00pm	2 hrs.	Race Registration
5:00pm - 7:00pm	2 hrs.	Technical Inspection



# CASCADE SPORTS CAR CLUB

Presents

## Chicane Challenge XXIV

June 4<sup>th</sup> and 5<sup>th</sup>, 2016

### This is a Chicane race

Entry to PIR will be through turn 8. No early entry on Friday until 5pm, if not participating in the Drivers Training.

**The Bridge open from Saturday 7am – 11pm & Sunday 7am – end of day**

This race is sanctioned by ICSCC, under the 2016 Competition Regulations as a championship race, organized by Cascade Sports Car Club and held at Portland International Raceway. Tracy Klein, Race Chairman, may be reached at 360-904-9999 until 9 p.m. or by email at [racergirl0110@yahoo.com](mailto:racergirl0110@yahoo.com)

Online Registration will be available at  
<http://cascade.motorsportreg.com>

<b>ENTRIES OPEN:</b>	Upon receipt of this announcement	
<b>ENTRIES CLOSE:</b>	Postmark by: <b>June 2nd, 2016</b>	
<b>ENTRY FEES:</b>	ICSCC or others – cash/check/Visa/MasterCard price	\$285
	<u>Cascade Members</u> – cash/check/Visa/MasterCard price	\$275
	Additional Race Entry	\$170
	LATE ENTRY FEE	\$ 60
	<b>Pit/Spectator passes</b>	<b>Free</b>
<b>Special Race:</b>	1 Hour Enduro	\$160

Mail entries to:	Registrar CSCC	Telephone: 503-860-6870
	Gail Fetterman	(please no calls after 10:00pm)
	2902 NE 151 <sup>st</sup> Ave	
	Portland, Oregon 97230-4517	Email: <a href="mailto:gailfetterman@comcast.net">gailfetterman@comcast.net</a>

**Express Tech:** Once you have registered and if you have an “Annual Tech”, you may present your “Tech Form” and logbook at Express Tech and receive your weekend “Tech Sticker”. Safety gear no longer needs to be presented at “Express Tech”.

**IMPORTANT NOTICE:** Only *ONE* support vehicle OR trailer in your pit area will be allowed. Additional parking is in the grass area. Drivers are responsible for the actions of their crew members: you may be disqualified as a result of their actions anywhere at PIR! The area to the north of the Pro Tower is reserved parking for ICSCC and CSCC officials: please do not park there as you will be asked to move.

### Class Rotation 6

- |   |   |
|---|---|
| Grp #1 – A-B-C Prod, SPO-M-U, PRO3                              | Grp #5 – ITA-B-C-S, GTL, E-F-H Imp Prod                     |
| Grp #2 – D-E-F-G-H-I Prod, CR, PRO7, SM,<br>CSM, HT, ITX, PRO44 | Grp #6 – FL, FLX, FV, FFF/500, S2, B-C-D-E-F SR, Nov<br>O/W |
| Grp #3 – CF, FF, FA, FM, FC, FBX, SRX                           | Grp #7 – Novice C/W   |
| Grp #4 – GT1-2-3, AS, ITE, RS, ST, SE46                         | Grp #8 – Mini Enduro ( 1 hour )                             |



# CASCADE SPORTS CAR CLUB

Presents

## Chicane Challenge XXIV

June 4<sup>th</sup> and 5<sup>th</sup>, 2016

*Chicane Race runs from ProPits*

### FRIDAY

6:00pm - 8:00pm Registration- 2<sup>nd</sup> Floor of the Tower  
6:00pm - 8:00pm Tech

### SATURDAY

7:30am - 12:30pm Registration  
7:30am - 1:30pm Tech Inspection  
7:30am - Novice Track Tour @ base of Tower  
**8:15am -** MANDATORY NOVICE MEETING WITH LICENSE DIRECTOR

8:30am - 8:45am Practice Group 6  
8:51am - 9:06am Practice Group 1  
9:12am - 9:27am Practice Group 2  
9:29am - 9:44am Practice Group 3  
9:50am - 10:05am Practice Group 4  
10:07am - 10:22am Practice Group 5  
10:28am - 10:43am Practice Group 7  
10:45am - 10:55am Group 8 Qualifying  
11:01am - 11:21am Group 9 Qualifying

**11:25am - 12:05pm** LUNCH !!!

**11:35am** MANDATORY Drivers Meeting MotoX Grand Stand (Group 8 Meeting right after)

12:10pm - 12:30pm Group 7 Qualifying  
12:36pm - 12:51pm Group 6 Qualifying  
12:57pm - 1:12pm Group 1 Qualifying  
1:18pm - 1:33pm Group 2 Qualifying  
1:39pm - 1:54pm Group 3 Qualifying

**1:45pm** MANDATORY NOVICE MEETING WITH LICENSE DIRECTOR

2:00pm - 2:15pm Group 4 Qualifying

**2:20pm** Senior Observers to assigned turns

2:21pm - 2:36pm Group 5 Qualifying  
2:45pm - 3:15pm **Race Group 7**  
3:25pm - 4:25pm **Race Group 8**  
4:35pm - 5:05pm **Race Group 9**

### SUNDAY

7:30am - 10:30am Registration  
7:30am - 11:00am Tech Inspection  
9:00am - 9:20am Group 6 Qualifying  
9:26am - 9:46am Group 1 Qualifying  
9:52am - 10:12am Group 2 Qualifying  
10:18am - 10:38am Group 3 Qualifying  
10:44am - 11:04am Group 4 Qualifying  
11:10am - 11:30am Group 5 Qualifying  
11:36am - 11:56am Group 9 Qualifying

**12:00pm - 12:45pm** LUNCH !!!

**12:10pm** Mandatory Drivers Meeting MotoX Grand Stand

12:50pm - 1:20pm **Race Group 6**  
1:30pm - 2:00pm **Race Group 1**  
2:10pm - 2:40pm **Race Group 2**  
2:50pm - 3:20pm **Race Group 3**  
3:30pm - 4:00pm **Race Group 4**  
4:10pm - 4:40pm **Race Group 5**  
4:50pm - 5:30pm **Race Group 9**

**Saturday Night BBQ Dinner -  
Prepared by Drivers in Race Groups 6 & 1**

**Grp 1** A-B-C Prod, SPO-M-U, PRO3  
**Grp 2** D-E-F-G-H-I Prod, CR, PRO7, HT, SM, CSM, PRO44, ITX  
**Grp 3** CF, FF, FA, FM, FC, FBX, SRX  
**Grp 4** GT1-2-3, AS, ITE, RS, ST, SE46  
**Grp 5** ITA-B-C-S, GTL, E-F-H Imp Prod  
**Grp 6** FV, FFF/500, FL, FLX, S2, B-C-D-E-F SR Novice O/W  
**Grp 7** Novice C/W  
**Grp 8** Mini Enduro  
**Grp 9** GASS

\*The 5 Min warning will be given approx. 8 Min before the start of the race



# CSCC Supplemental Regulations 2016

## Infractions will result in penalties assessed to the driver.

1. Open to cars eligible under ICSCC current regulations.
2. This event is organized under 2016 ICSCC Competition Regulations, and all who enter PIR are subject to them. Cascade Sports Car Club reserves the right to refuse entry to this event or to PIR at any time.
3. Alcoholic beverages allowed in the *beer garden area only*, and only after the track closes. **You may NOT bring alcohol into PIR!** This is an Oregon Liquor Commission requirement. Any person caught entering PIR with alcohol will be *removed from the raceway*.
4. Registration Hours: 6:00 pm-8:00 Friday, 7:30 am - 1:30 pm Saturday and 7:30 am - 10:30 am Sunday.
5. Express Tech is available at Registration for those drivers who have an acceptable, current Annual Tech inspection noted in their vehicle logbook, and the driver is not part of the mandatory Tech presentation group for the weekend. Express Tech drivers should bring their personal safety gear and vehicle logbook to Registration where your gear will be inspected and a weekend tech sticker issued.
6. People under 18 years old are not allowed in hot pits, pre-grid or on victory laps. Children under 12 must have direct adult supervision at all times.
7. A current and properly completed minor release form, signed by an authorized adult, must be on record for all minor participants brought into PIR.
8. Competition numbers must be readable: Section 1106 enforced.
9. The scales will be open Saturday from noon and Sunday all day.
10. **No skateboards or scooters allowed in the paddock area. Users of bicycles and small-motorized vehicles may have riding privileges revoked at any time by the Race Chairperson. 15 MPH speed limit in the paddock.**
11. Refueling is not allowed in pre-grid. Fueling in the hot pits requires a crewmember assigned only to operate a fire bottle. Excess spillage will result in a penalty.
12. *No smoking* allowed in hot pits, pre-grid or *any* PIR building.
13. Only one support vehicle allowed in the paddock. Pit and pre-grid roads must remain clear.
14. Noise rule ICSCC 1112 enforced! 103.0 dB at 50 ft.: *no exceptions!*
15. Oregon State Law requires functioning mufflers to be used at PIR. Functioning mufflers must be capable of reducing sound energy by at least 5dB at trackside. Cars losing mufflers, even if they are still below the sound level, will be black-flagged immediately.
16. Damage to the track, grounds or buildings, regardless of cause, will be charged to the driver responsible. Also, damage to any equipment or devices used by the sanctioning body (ICSCC) or sponsoring club (CSCC) to conduct this race, regardless of cause, will be charged to the driver responsible.
17. Family and crewmembers of drivers are to contact the landline communication person at pre-grid with any questions regarding their driver or car while on track.
18. All entrants for this event shall present at tech inspection an empty, sealable container or containers, marked with the driver's name and license number, capable of holding 2 gallons of liquid. These are to be used to remove all oil, cleaners, brake fluid, etc. from PIR. There will be no drums provided.
19. Anyone caught dumping oil at the raceway will be fined and banned from the raceway. This is a PIR regulation.
20. If entries exceed the number of cars allowed on the track for a particular event, drivers and cars entered as an "additional event" will be restricted from participating, on a first-come, first-served priority based on the date entries were received. This is in order to allow participation by all drivers for whom the event is their primary event, including Novices upgrading to a championship event.
21. NSF checks will be charged an additional \$50 fee.
22. The racing "hot pit" is defined as that area under the control of Hot Pits personnel. This area is located immediately west of the break in the concrete wall half way up the pit lane. Per ICSCC rule #1607, any person over that "pit wall" during practice, qualifying or races shall wear long pants, shirts that cover the shoulders, and shall not be barefoot or wear open-toed shoes. At the one-minute warning, pre-grid becomes a "hot" area. At that time, pre-grid must be cleared of all crew, support personnel and spectators. Notwithstanding the above, ICSCC rule #1607 does not apply to the pre-grid area.
23. All cars that are towed into the paddock area are subject to being dropped off in impound. Drivers must wear all required drivers safety equipment (per ICSCC rule # 1105) before they are allowed to enter the track, while they are on the track, beyond positive protection, under flat tow, or in the hot pits area.
24. The 5-minute warning will be given approximately 8 minutes before the start of the race.
25. Due to recent incidents, extension cords from the pit exit to tech/scales must use a more secure method other than Duct Tape.
26. Staggered start and split start requests shall be submitted to the race steward no later than the end of on-track activity on the day previous to the race.
27. Blendline- the Red Blendline stays on drivers left as you enter the racetrack from the pit area. You are required to stay on the right side until the Red Blend line ends. This is **REQUIRED EVERY TIME you** enter the Race Track, other than the race out lap. The Red Blendline stays on the drivers left at the end of the Turn 12 tirewall. **If you are to exit the race track at anytime, you are required to stay completely to the right.** If you cross the blendline with ONE TIRE you are required to stay out for one more lap unless you are exiting the track after you have received the checkered flag and crossed the start/finish line.
28. Speed Limit 35mph from the bridge to pit out.

Thank you – Tracy Klein, CSCC Race Chairman



# ICSCC RACE ENTRY FORM



Please type or print Complete all information and sign entry

© ICSCC 1-12-29

DO NOT WRITE IN THIS SPACE	DO NOT WRITE IN THIS SPACE	DO NOT WRITE IN THIS SPACE
CAR # _____	CLASS _____	GROUP # _____
Amount prepaid _____		Total amount due _____
Amount paid at track _____	Cash _____	Check # _____ Cr. Card # _____

Drivers Name:			Address:		
City:		State/Prov	Zip/Postal Code	Best Contact # - Area Code & Phone Number	
Email address:				Cell Phone:	
In case of Emergency Notify:			At track? <input type="checkbox"/> Yes <input type="checkbox"/> No	Relationship:	Phone:
ICSCC Car #	ICSCC License #	Competition License Type <input type="checkbox"/> ICSCC <input type="checkbox"/> CACC <input type="checkbox"/> SCCA <input type="checkbox"/> Other		Club Affiliation	Preferred NON-ICSCC CAR#
1 <sup>st</sup> Race Group	Class	2 <sup>nd</sup> Race Group	Class	3 <sup>rd</sup> Race Group	Class
Number of Races Entered		Car Make:		Model	Color
Sponsors:					

Name of Event	1 <sup>st</sup> Entry Fee	<b>Crew: First 5, list additional on back</b>
Date of Event	2 <sup>nd</sup> Entry Fee	
Sponsoring Club	3 <sup>rd</sup> Entry Fee	
<b>Note: IF MULTIPLE RACE EVENT, FILL OUT FORM FOR EACH RACE DAY</b>	Worker Fund Donation	
	Transponder Rental	
	Passes or Late Fee	
<b>Note: FEE SECTION MUST BE FILLED OUT</b>	Amount enclosed	
	Amount-Pay at Track	

Group 1	<input type="checkbox"/> A Prod	<input type="checkbox"/> B Prod	<input type="checkbox"/> C Prod	<input type="checkbox"/> SPU	<input type="checkbox"/> SPO	<input type="checkbox"/> SPM	<input type="checkbox"/> PRO3
Group 2	<input type="checkbox"/> D Prod	<input type="checkbox"/> E Prod	<input type="checkbox"/> F Prod	<input type="checkbox"/> G Prod	<input type="checkbox"/> H Prod	<input type="checkbox"/> I Prod	<input type="checkbox"/> PRO44 <input type="checkbox"/> CR <input type="checkbox"/> PRO7 <input type="checkbox"/> SM <input type="checkbox"/> CSM <input type="checkbox"/> HT <input type="checkbox"/> ITX
Group 3	<input type="checkbox"/> CF	<input type="checkbox"/> FF	<input type="checkbox"/> FA	<input type="checkbox"/> FM	<input type="checkbox"/> FC	<input type="checkbox"/> FBX	<input type="checkbox"/> SRX
Group 4	<input type="checkbox"/> GT-1	<input type="checkbox"/> GT-2	<input type="checkbox"/> GT-3	<input type="checkbox"/> AS	<input type="checkbox"/> ITE	<input type="checkbox"/> RS	<input type="checkbox"/> ST <input type="checkbox"/> SE46
Group 5	<input type="checkbox"/> ITA	<input type="checkbox"/> ITB	<input type="checkbox"/> ITC	<input type="checkbox"/> ITS	<input type="checkbox"/> GTL	<input type="checkbox"/> EIP	<input type="checkbox"/> FIP <input type="checkbox"/> HIP
Group 6	<input type="checkbox"/> FV	<input type="checkbox"/> FFF/500	<input type="checkbox"/> S-2	<input type="checkbox"/> BSR	<input type="checkbox"/> CSR	<input type="checkbox"/> DSR	<input type="checkbox"/> ESR <input type="checkbox"/> FSR <input type="checkbox"/> FL <input type="checkbox"/> FLX <input type="checkbox"/> NOW
Group 7	<input type="checkbox"/> Novice Closed Wheel						

Failure to submit **completed, signed and legible forms** will constitute a late entry and late entry fee may be assessed. See Com. Regs. for details.

The undersigned represents and affirms to the sponsoring club, as well as the ICSCC, that the undersigned has reviewed and agrees to compete under the current ICSCC competition regulations and any supplementary regulations which may be issued by a sponsoring club pertaining to this event. The undersigned further certifies that the car's equipment complies with current ICSCC competition regulations. The undersigned certifies that the undersigned has read the race announcement and holds a competition license authorizing the undersigned's participation in this race event. The undersigned releases unto ICSCC and the sponsoring club the rights to use the undersigned's name and images of both the undersigned and the undersigned's automobile for promotional purposes as deemed fit by the ICSCC and/or the sponsoring club.

ENTRANT'S LEGAL SIGNATURE: \_\_\_\_\_ DATE: \_\_\_\_\_





# ICSCC RACE ENTRY FORM



Please type or print Complete all information and sign entry

© ICSCC 1-12-29

DO NOT WRITE IN THIS SPACE	DO NOT WRITE IN THIS SPACE	DO NOT WRITE IN THIS SPACE
CAR # _____	CLASS _____	GROUP # _____
Amount prepaid _____		Total amount due _____
Amount paid at track _____	Cash _____	Check # _____
Cr. Card # _____		

Drivers Name:		Address:			
City:		State/Prov	Zip/Postal Code	Best Contact # - Area Code & Phone Number	
Email address:				Cell Phone:	
In case of Emergency Notify:			At track? <input type="checkbox"/> Yes <input type="checkbox"/> No	Relationship:	Phone:
ICSCC Car #	ICSCC License #	Competition License Type <input type="checkbox"/> ICSCC <input type="checkbox"/> CACC <input type="checkbox"/> SCCA <input type="checkbox"/> Other		Club Affiliation	Preferred NON-ICSCC CAR#
1 <sup>st</sup> Race Group	Class	2 <sup>nd</sup> Race Group	Class	3 <sup>rd</sup> Race Group	Class
				Car # if different	TRANSPONDER # (Mandatory) <small>(if renting - fill out rental form &amp; fax)</small>
Number of Races Entered		Car Make:		Model	Color

Sponsors:

Name of Event	1 <sup>st</sup> Entry Fee	<b>Crew: First 5, list additional on back</b>
Date of Event	2 <sup>nd</sup> Entry Fee	
Sponsoring Club	3 <sup>rd</sup> Entry Fee	
<b>Note: IF MULTIPLE RACE EVENT, FILL OUT FORM FOR EACH RACE DAY</b>	Worker Fund Donation	
	Transponder Rental	
	Passes or Late Fee	
<b>Note: FEE SECTION MUST BE FILLED OUT</b>	Amount enclosed	
	Amount-Pay at Track	

Group 1	<input type="checkbox"/> A Prod	<input type="checkbox"/> B Prod	<input type="checkbox"/> C Prod	<input type="checkbox"/> SPU	<input type="checkbox"/> SPO	<input type="checkbox"/> SPM	<input type="checkbox"/> PRO3
Group 2	<input type="checkbox"/> D Prod	<input type="checkbox"/> E Prod	<input type="checkbox"/> F Prod	<input type="checkbox"/> G Prod	<input type="checkbox"/> H Prod	<input type="checkbox"/> I Prod	<input type="checkbox"/> PRO44
Group 3	<input type="checkbox"/> CF	<input type="checkbox"/> FF	<input type="checkbox"/> FA	<input type="checkbox"/> FM	<input type="checkbox"/> FC	<input type="checkbox"/> FBX	<input type="checkbox"/> SRX
Group 4	<input type="checkbox"/> GT-1	<input type="checkbox"/> GT-2	<input type="checkbox"/> GT-3	<input type="checkbox"/> AS	<input type="checkbox"/> ITE	<input type="checkbox"/> RS	<input type="checkbox"/> ST
Group 5	<input type="checkbox"/> ITA	<input type="checkbox"/> ITB	<input type="checkbox"/> ITC	<input type="checkbox"/> ITS	<input type="checkbox"/> GTL	<input type="checkbox"/> EIP	<input type="checkbox"/> FIP
Group 6	<input type="checkbox"/> FV	<input type="checkbox"/> FFF/500	<input type="checkbox"/> S-2	<input type="checkbox"/> BSR	<input type="checkbox"/> CSR	<input type="checkbox"/> DSR	<input type="checkbox"/> ESR
Group 7	<input type="checkbox"/> Novice Closed Wheel						

Failure to submit **completed, signed and legible forms** will constitute a late entry and late entry fee may be assessed. See Com. Regs. for details.

The undersigned represents and affirms to the sponsoring club, as well as the ICSCC, that the undersigned has reviewed and agrees to compete under the current ICSCC competition regulations and any supplementary regulations which may be issued by a sponsoring club pertaining to this event. The undersigned further certifies that the car's equipment complies with current ICSCC competition regulations. The undersigned certifies that the undersigned has read the race announcement and holds a competition license authorizing the undersigned's participation in this race event. The undersigned releases unto ICSCC and the sponsoring club the rights to use the undersigned's name and images of both the undersigned and the undersigned's automobile for promotional purposes as deemed fit by the ICSCC and/or the sponsoring club.

ENTRANT'S LEGAL SIGNATURE: \_\_\_\_\_ DATE: \_\_\_\_\_



# ICSCC 2016 COMPETITION LICENSE APPLICATION

Application Fee: \$85 U.S. Funds

**ICSCC LICENSE REGISTRAR**  
**Linda Heinrich**  
 P.O. Box 1977  
 North Plains, OR 97133-1977  
 Tel: 503-647-5399  
 Fax: 503-286-5237  
 Email: license\_registrar@icscc.com

DO NOT WRITE IN THIS SPACE		
Date Received:	_____	GRP/License # _____
Fee:	_____	GRP/License # _____
Check/Cash:	_____	GRP/License # _____
Photos:	_____	_____
Date Issued:	_____	Approved By: _____

**APPLICANT: PLEASE PRINT LEGIBLY AND SIGN: Return to the LICENSE REGISTRAR** (address listed above left)

NAME		STREET ADDRESS	
CITY	STATE / PROVINCE	ZIP / POSTAL CODE	AREA CODE / TELEPHONE NUMBER
DATE OF BIRTH	DRIVER'S LICENSE NUMBER	STATE / PROV	EMAIL ADDRESS
CLUB AFFILIATION (REFLECTS CONTEST BOARD VOTE)	FOUR DIGIT COMPETITION LICENSE #	CAR MAKE and MODEL ___ Own ___ Rent ___ Share	

**YOUR GROUP CHOICES FOR GUARANTEED NUMBERS ARE (Mark with an "X"):**

<b>GROUP 1</b>	<input type="checkbox"/> A PROD <input type="checkbox"/> B PROD <input type="checkbox"/> C PROD <input type="checkbox"/> SPU <input type="checkbox"/> SPM <input type="checkbox"/> SPO <input type="checkbox"/> PRO3
<b>GROUP 2</b>	<input type="checkbox"/> D PROD <input type="checkbox"/> E PROD <input type="checkbox"/> F PROD <input type="checkbox"/> G PROD <input type="checkbox"/> H PROD <input type="checkbox"/> I PROD <input type="checkbox"/> SPEC MIATA <input type="checkbox"/> CR <input type="checkbox"/> PRO7 <input type="checkbox"/> CLUB SPEC MIATA <input type="checkbox"/> HT <input type="checkbox"/> ITX <input type="checkbox"/> PRO44
<b>GROUP 3</b>	<input type="checkbox"/> CF <input type="checkbox"/> FF <input type="checkbox"/> FA <input type="checkbox"/> FM <input type="checkbox"/> FC <input type="checkbox"/> FBX <input type="checkbox"/> SRX
<b>GROUP 4</b>	<input type="checkbox"/> GT-1 <input type="checkbox"/> GT-2 <input type="checkbox"/> GT-3 <input type="checkbox"/> AS <input type="checkbox"/> ITE <input type="checkbox"/> RS <input type="checkbox"/> ST <input type="checkbox"/> SE46
<b>GROUP 5</b>	<input type="checkbox"/> ITA <input type="checkbox"/> ITB <input type="checkbox"/> ITC <input type="checkbox"/> ITS <input type="checkbox"/> GTL <input type="checkbox"/> EIP <input type="checkbox"/> FIP <input type="checkbox"/> HIP
<b>GROUP 6</b>	<input type="checkbox"/> FV <input type="checkbox"/> FFF/500 <input type="checkbox"/> FL <input type="checkbox"/> FLX <input type="checkbox"/> S-2 <input type="checkbox"/> BSR <input type="checkbox"/> CSR <input type="checkbox"/> DSR <input type="checkbox"/> ESR <input type="checkbox"/> FSR <input type="checkbox"/> NOVICE OPEN WHEEL
<b>GROUP 7</b>	<input type="checkbox"/> NOVICE CLOSED WHEEL

NUMBER CHOICES/GROUP		
1ST	2ND	3RD

**YOUR CHOICES FOR NUMBERS ARE: 00 - 299**

**PLEASE COMPLETE CHECK LIST:**

<input type="checkbox"/>	Money order or check: (U.S. funds) for \$85.00 or Motorsportsreg.com: for \$90.00
<input type="checkbox"/>	<input type="checkbox"/> Use last year's photo on file <input type="checkbox"/> New photo (digital jpg file)
<input type="checkbox"/>	Proof of club membership valid through 11/30/16 <b>Send</b> a copy of your card, MSR* receipt or email verification from club
<input type="checkbox"/>	Form signed and dated
<input type="checkbox"/>	Medical History Application (this form is filled out by the driver yearly)
<input type="checkbox"/>	Physician Exam Form, if required by ICSCC Competition Regulation # 302.C
<input type="checkbox"/>	Doctor has marked "Is Fit" or "Should be Reviewed" in Recommendation section on Physical Examination Form
<input type="checkbox"/>	<b>NOVICES</b> – photocopy of Certificate of Completion of Driving School
<input type="checkbox"/>	Check here to opt out of receiving the ICSCC Memo by postal mail (every issue is available online)

APPLICANT'S LEGAL SIGNATURE:

DATE:

, 20\_\_

\* MotorsportReg

Please allow 15 days for processing **AFTER** receipt of application.  
 Thank you. **Licenses needed in less than 15 days may incur a \$75.00 expediting fee.**

### Memo Commercial Advertising Rates

Full page \$80/issue full year, or \$110/issue  
1/2 page \$50/issue full year, or \$70/issue  
1/4 page \$30/issue full year, or \$40/issue  
1/8 page \$20/issue full year, or \$25/issue

Commercial classified \$10/issue full year  
or \$12/issue

### Memo Classified Ad Policies:

Non-commercial ads are free to Conference licensed drivers, officials, and workers.

To place an ad in the Memo, contact [editormemo@icscc.com](mailto:editormemo@icscc.com).  
Proof your ad when it first appears - it is presumed correct unless the editor is notified in writing.

Ads run for 3 issues then are automatically cancelled unless renewed. Numbers at the end of an ad show when it

### 2016 MEMO PUBLICATION SCHEDULE

memo #2	March 15	IRDC enduro CSCC race 1
memo #3	April 15	IRDC 2 CSCC 3
memo #4	May 15	NWMS 6/8
memo #5	June 1	SCCBC 9 IRDC 10
memo #6	July 15	CSCC 11
memo #7	Aug 1	TC 12-13 IRDC 14 CSCC enduro
memo #8	Sept 1	rule changes banquet info
memo #9	Oct 1	awards banquet
memo #10	Dec 1	approved rule changes

*Please allow one week for memo submissions*

### "Motorsports Photography and Video of your Wheels!"

Hello, I'm Austin Bradshaw, I'm 14 years old and my business is Flying Bye Photo!

I take motorsports photography and video in the Pacific Northwest area. We take, sell and edit pictures! We offer many other services as well. We can edit your video and make it the way you want it. We can also get you a HD GoPro Hero 3 so you can take video of your own! And if you have a photo that you want to improve, we can make it the way you want it, such as collages, sponsorship pictures, and custom effects! We even do full-on documentaries for a race weekend!

I take pictures and video at: ICSCC (Our Number 1 Club!), Can-Am Kart Challenge, and SCCA.

If you're interested in any of our services, email us at:

[flyingphotoaustin@gmail.com](mailto:flyingphotoaustin@gmail.com)  
Or visit our website on line at:  
[flyingbyephoto.fotomerchant.com](http://flyingbyephoto.fotomerchant.com).



Gerry Frechette

has photos of your car  
See them on the  
internet

Tour our website and you can see all the photos from an event in one place, pick the ones you like, and order them online.  
To see your photos:

Go to [www.gerryfrechette.zenfolio.com](http://www.gerryfrechette.zenfolio.com) and pick a photo album to view. No user name or password needed.

From there, follow directions for ordering online or contact Gerry or Sue for further info at 604-734-4721 or [gerryf@telus.net](mailto:gerryf@telus.net).

For photos prior to 2011, continue to view them at DotPhoto, but please do not order from there; instead, contact us directly and we will process your order.

### Racing photography by Doug Berger



Photographic prints, digital copies, t-shirts, mugs, phone/tablet covers, water bottles, mouse pads, yadda yadda, yabba dabba do.

We offer the largest selection of photos from ICSCC events, visit us online at:



E-Mail: [doug@dbpics.com](mailto:doug@dbpics.com)



**Memo #3**  
**May 2016**

P.O. Box 1977  
North Plains, OR 97133-1977

Return Service Requested

Printed in the USA

**The Crimes We Commit Against Our Heads**



- After 30 minutes wearing your helmet is your head killing you?
- Is your neck weak as a kitten after one track session?
- Does your helmet feel like it weighs 100 lbs. by the middle of the race?
- Do you roast every time you get in the car and put on your helmet?
- Blasting down the straight away cause you to see double?

These 5 crimes against your head can be corrected with the right helmet. Armadillo Racing is your #1 source for racing helmets in the NW and they can solve these crimes and others like them so you can race comfortably again.



NOW IS THE TIME to rid yourself of that old, heavy, worn out, sticky or outdated "brain bucket" and let Armadillo Racing fit you into the perfect helmet. Here's why: **1)** Knowledgeable staff who will show you the right helmets for your application. Aerodynamic helmets to reduce buffeting, forced air for cooling, large eyeport for better vision, or low cost to meet your budget. Whatever you desire. **2)** Largest inventory in the NW means you can try on a helmet to ensure perfect comfort and fit. **3)** Outstanding selection by manufacturer enables you to compare helmets to find the perfect one for you. **Snell 2015 Helmets are now available** and more arriving daily. Huge discounts of Snell 2010 helmets – legal until 2021. Call Now for your new helmet.



MyLaps (formerly AMB) Flex, direct charge, or rechargeable transponders from as low as \$150. Whatever transponder you need, order today and be ready for the 2016 racing season.



– Everything you need to go racing –



**For the driver:** All your personal safety gear and a great selection – Suits, gloves, helmets, underwear, shoes and of course a HANS® device including the new lighter weight HANS III.

**For your car:** Seats, roll over padding, seatbelts, right and left side window nets, on-board fire systems, brake pads and brake fluid



"AR is the best small business in the NW Andy's passion for racing and quality of products offered is why AR is integral to racing in the NW" **Dave Bennitt** – Merley DSR • "Armadillo is my go-to for all my racing needs. I like that Andy is local and knowledgeable!"

**Eddie Nakato** – BMW M3 • "My very first experience in racing was listening to one of Andy's presentations at IRDC. That was 15 years ago, and he continues to amaze. We are blessed to be able to be associated with such a dedicated, engaging, enthusiastic professional." **John Rankin** – Beach Mk4B



Ask for our free Report: How to Buy Exceptional Safety Equipment to Be Safe, Look Professional, and Feel Comfortable When You Go Racing.

On Track With All Your Racing Needs • 1-888-211-9129 • Toll Free USA and Canada • [www.armadilloracing.com](http://www.armadilloracing.com)  
Visit our new Facebook page at [www.facebook.com/armadilloracinginc](http://www.facebook.com/armadilloracinginc)