



# ICSCC Memo #6—July 2011

The Official Publication of the  
International Conference of Sports Car Clubs

## In This Issue:

- CSCC Race Announcement #11, August 13-14
- SCCBC Race Announcement #12/13, September 3-5

## No President's Message

## OUT AND ABOUT

Some goings on about our friends — If you have anything to add here, please let the editor know. We'll keep you posted with whatever we find out.

A big thank-you to **Debbie Morton** for replacing me at the Mission race in June! So sorry I missed the event, but Debbie did a great job. Thanks, Debbie!  
Karen McCoy

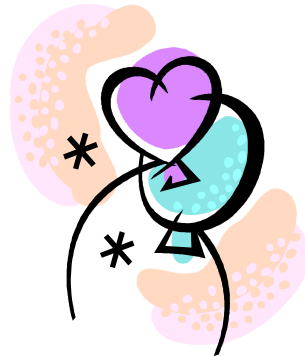
**Gail Fetterman** provides great snacks at Cascade & Team Continental registration! Don't know what we'd do without her, probably starve. Thanks, Gail!  
All the gang in Registration

Did you know we now have 376 licensed Conference drivers?

### Hold the Date!

August 6-7 at Mission Raceway Park.

Children's Charity Grand Prix.



## No License Director Message

## No Steward's Soapbox (He's Been Busy!)

# ICSCC Officials 2011

Please respect our volunteers - no calls or faxes after 9 p.m.

President	Kevin Skinner president@icscc.com	25141 53 <sup>rd</sup> Avenue	Aldergrove BC V4W 1T1	604-856-8957 res 604-230-6084 cell
Vice President	Dick Boggs vice_president2@icscc.com	13749 97th Avenue NE	Kirkland WA 98034	425-823-4883
Vice President	Linda Heinrich vice_president@icscc.com	P.O. Box 1977	North Plains OR 97133-1977	503-647-5399 res 503-647-5389 fax
Vice President	Dennis Peters vice_president3@icscc.com	7645 Ray Nash Drive NW	Gig Harbor WA 98335	253-851-2801 res 253-405-2646 cell
Secretary	Lynn Coupland secretary@icscc.com	5670 SW Menefee Drive	Portland OR 97239	503-246-3511 res 503-701-3547 cell
Treasurer / Advisor	Dan Heinrich treasurer@icscc.com	P.O. Box 1977	North Plains OR 97133-1977	503-647-5399 res 503-310-6610 cell 503-647-5389 fax
Advisor	David Bennitt ddbennitt@aol.com	14023 Bear Creek Road NE	Woodinville WA 98077	425-869-2868
Race Steward	Tom Olsson tolsson55@gmail.com	13057 28th Avenue NE	Seattle WA 98125	206-890-8616
License Director	Bob Mearns license_director@icscc.com	22638 Old Woodinville Duvall Rd	Woodinville WA 98077	206-713-3345
License Registrar	Karen McCoy license_registrar@icscc.com	13702 SW Hall Boulevard, #4	Tigard OR 97223	503-730-9007 cell 503-684-0976 fax
Sound Control	Albert Monson sound@icscc.com	11609 55 Avenue E Apt 204	Puyallup WA 98373	253-307-7588
Memo Editor	Karen McCoy memo@icscc.com	13702 SW Hall Boulevard, #4	Tigard OR 97223	503-730-9007 cell 503-684-0976 fax
Website	Steve Adams admin@icscc.com	18916 197th Avenue NE	Woodinville WA 98077	425-260-5474
Race Officials Div.	Lynn Rimmer rod_director@icscc.com	8620 154th Street	Surrey BC V3S 3N6	604-501-1503
Points Keeper	Mike Tripp points@icscc.com	532 Sky Lane	Forest Grove OR 97116	503-359-4837
Medical Officer	Doug Jennings medical@icscc.com	467 Solnae Place NW	Bremerton WA 98311	360-692-6244
Legal Advisor	Charles Denkers	4208 SE Harrison	Milwaukie OR 97222	503-222-6102 bus
Insurance Advisor	Scott Adare insurance@icscc.com	1112 E Woodcrest Court	Spokane WA 99208	509-230-0929 res 509-466-4776 fax
Historian	Gerry Frechette historian@icscc.com	2355 West 7th Avenue	Vancouver BC V6K 1Y4	604-734-4721 tel & fax
PR North / South	POSITIONS OPEN			
Banquet Facilitator	Deanne Lensen banquet@icscc.com	16529 - 108 A Avenue	Surrey BC V4N 5B9	604-951-8214
Banquet Support	Peggy Ann Walker banquet2@icscc.com	6327 SW Hiawatha Court	Lake Oswego OR 97034	503-537-9103 bus

The ICSCC Memo is a publication of the International Conference of Sports Car Clubs. The ICSCC Memo and its contents in entirety are copyright by the International Conference of Sports Car Clubs. Any reproduction by any means, electronic or mechanical, without the express written permission of the International Conference of Sports Car Clubs is prohibited. The ICSCC Memo accepts written comments subject to ICSCC policy limitations but will not be held responsible for the content of such letters. Letters may be published, at Editor's discretion, only if submitted with the author's name, address, and phone number. The ICSCC Memo is printed in the USA by Lithtex Printing Solutions, Hillsboro, OR. Editor: Karen McCoy, 13702 SW Hall Boulevard, #4, Tigard OR 97223, 503-730-9007. The publisher reserves the right to reject any paid or unpaid advertisement.



## CASCADE SPORTS CAR CLUB

Presents

### Doernbecher Dash XXVII

August 13<sup>th</sup> and 14<sup>th</sup>, 2011

This is a *Chicane* race run from the Pro Pits

Entry to PIR will be through Turn 8 only. Gates open at 5:00 pm Friday.

The Bi-Mart Bridge open from Saturday 7am – 11pm & Sunday 7am – end of day

This race is sanctioned by ICSCC, under the 2011 Competition Regulations as a championship race, organized by Cascade Sports Car Club and held at Portland International Raceway. Kai Keliikoa, Race Chairman, may be reached at 360-903-9258 until 9 p.m. or by email at [kai@dickhamah.com](mailto:kai@dickhamah.com)

If your family and friends couldn't come with you to PIR tell them they can watch you live on line at <http://www.pirlive.com>

Online Registration will be available at <http://cascade.motorsportreg.com>

ENTRIES OPEN:	Upon receipt of this announcement	
ENTRIES CLOSE:	Postmark or fax by: Aug. 10th, 2011	
ENTRY FEES:	<u>ICSCC or others</u> – cash/check/Visa/MasterCard price	\$260.00
	<u>Cascade Members</u> – cash/check/Visa/MasterCard price	\$250.00
	Additional Race Entry	\$145.00
	LATE ENTRY FEE	\$ 55.00
	Pit/Spectator passes	Free

Mail entries to:	Registrar CSCC	Telephone: 503-647-5399
	Dan Heinrich	Fax: 503-647-5389
	PO Box 1977	(please no calls after 10:00pm)
	North Plains, OR 97133	Email: <a href="mailto:racing2132@aol.com">racing2132@aol.com</a>

**Express Tech:** "If your entry is completed in full, you have no license issues, you do not need a rental transponder, you have an Annual Tech, you are not part of the mandatory presentation group for the weekend and you have prepaid your entry fee, you will be eligible for Express Tech, where after you're registered your safety equipment will be tech'ed and the weekend tech sticker issued"

**IMPORTANT NOTICE:** Only *ONE* support vehicle OR trailer in your pit area will be allowed. Additional parking is in the grass area. Drivers are responsible for the actions of their crew members: you may be disqualified as a result of their actions anywhere at PIR! The area to the north of the Pro Tower is reserved parking for ICSCC and CSCC officials: please do not park there as you will be asked to move.

### Class Rotation 2 MANDATORY TECH FOR ALL GROUP 1

Grp #1 – A-B-C-D Prod, SPO-M-U, PRO3	Grp #5 – ITA-B-C-S, GTL, E-F-H Imp Prod
Grp #2 – E-F-G-H-I-J Prod, CR, Pro-7, SM, CSM, H-4, ITX	Grp #6 – FL, FV, FFF/500, S2, A-B-C-D-E-F SR, Novice O/W
Grp #3 – CF, FF, FA, FM, FC	Grp #7 – Novice C/W
Grp #4 – GT1-2-3, AS, ITE, RS, ST	



## CASCADE SPORTS CAR CLUB

Presents

### Doernbecher Dash XXVII

August 13<sup>th</sup> and 14<sup>th</sup>, 2011

#### FRIDAY

6:00pm - 8:00pm  
6:00pm - 8:00pm

Registration- Second Floor of the Pro Tower  
Tech- East end of the paddock

#### SATURDAY

7:30am - 1:30pm  
7:30am - 2:30pm  
7:30am -  
8:00am -  
8:30am - 8:50am  
8:55am - 9:15am  
9:20am - 9:40am  
9:45am - 10:05am  
10:10am - 10:30am  
10:35am - 10:55am  
11:00am - 11:20am  
11:30am - 11:50am  
12:00pm - 1:10pm  
12:30 pm  
11:30am - 1:10pm  
1:20pm - 1:40pm  
1:47pm - 2:07pm  
2:14pm - 2:34pm  
3:00pm  
2:41pm - 3:01pm  
3:08pm - 3:28pm  
3:35pm - 3:55pm  
4:02pm - 4:22pm  
3:30pm  
4:29pm - 4:59pm

Registration  
Tech Inspection - **MANDATORY TECH FOR ALL GROUP 1**  
Novice Track Tour @ base of Pro Tower  
**MANDATORY NOVICE MEETING WITH LICENSE DIRECTOR**  
Practice Group 2  
Practice Group 3  
Practice Group 4  
Practice Group 5  
Practice Group 6  
Practice Group 1  
Novice C/W Practice  
**KIDS KARAVAN**  
**DOERNBECHER RIDES**  
**Drivers Meeting Moto X Stand**  
**LUNCH !!!**  
Novice C/W Qualifying  
Group 2 Qualifying  
Group 3 Qualifying  
**MANDATORY NOVICE MEETING WITH LICENSE DIRECTOR**  
Group 4 Qualifying  
Group 5 Qualifying  
Group 6 Qualifying  
Group 1 Qualifying  
**Senior Observers to Pre-Grid**  
Novice C/W Race

**Saturday Night BBQ Dinner -  
Provided by PRO 3**

#### SUNDAY

7:30am - 10:30am  
7:30am - 11:00am  
9:00am - 9:20am  
9:30am - 9:50am  
10:00am - 10:20am  
10:30am - 10:50am  
11:00am - 11:20am  
11:30am - 11:50am  
12:00pm - 12:20pm  
12:30pm - 2:00pm  
12:15pm - 2:00pm  
12:20pm  
2:15pm - 2:45pm  
3:00pm - 3:30pm  
3:45pm - 4:15pm  
4:30pm - 5:00pm  
5:15pm - 5:45pm  
6:00pm - 6:30pm

Registration  
Tech Inspection  
Group 2 Qualifying  
Group 3 Qualifying  
Group 4 Qualifying  
Group 5 Qualifying  
Group 6 Qualifying  
Group 1 Qualifying  
**KIDS KARAVAN**  
**DOERNBECHER RIDES**  
**LUNCH !!!**  
**Mandatory Drivers Moto X Stand**  
Race Group 2  
Race Group 3  
Race Group 4  
Race Group 5  
Race Group 6  
Race Group 1

Grp 1 A-B-C-D Prod, SPO-M-U, PRO3  
Grp 2 E-F-G-H-I-J Prod, CR, Pro7, H4  
SM, CSM, ITX  
Grp 3 CF, FF, FA, FM, FC  
Grp 4 GT1-2-3, AS, ITE, RS, ST  
Grp 5 ITA-B-C-S, GTL,  
E-F-H Imp Prod  
Grp 6 FL, FV, FFF/500, S2,  
A-B-C-D-E-F SR, Novice O/W  
Grp 7 Novice C/W

\*The 5 Minute warning will be given  
approximately 8 minutes before the start  
of the race



## CSCC Supplemental Regulations 2011

### Infractions will result in penalties assessed to the driver.

1. Open to cars eligible under ICSCC current regulations.
2. This event is organized under 2011 ICSCC Competition Regulations, and all who enter PIR are subject to them. Cascade Sports Car Club reserves the right to refuse entry to this event or to PIR at any time.
3. Alcoholic beverages allowed in the *beer garden area only*, and only after the track closes. **You may NOT bring alcohol into PIR!** This is an Oregon Liquor Commission requirement. Any person caught entering PIR with alcohol will be *removed from the raceway*.
4. Registration Hours: 6:00 pm-8:00 Friday, 7:30 am - 1:30 pm Saturday and 7:30 am - 10:30 am Sunday.
5. Express Tech is available at Registration for those drivers who have an acceptable, current Annual Tech inspection noted in their vehicle logbook, and the driver is not part of the mandatory Tech presentation group for the weekend. Express Tech drivers should bring their personal safety gear and vehicle logbook to Registration where your gear will be inspected and a weekend tech sticker issued.
6. People under 18 years old are not allowed in hot pits, pre-grid or on victory laps. Children under 12 must have direct adult supervision at all times.
7. A current and properly completed minor release form, signed by an authorized adult, must be on record for all minor participants brought into PIR.
8. Competition numbers must be readable: Section 1106 enforced.
9. The scales will be open Saturday from noon and Sunday all day.
10. **No skateboards or scooters allowed in the paddock area.** Users of bicycles and small-motorized vehicles may have riding privileges revoked at any time by the Race Chairperson.
11. Refueling is not allowed in pre-grid. Fueling in the hot pits requires a crewmember assigned only to operate a fire bottle. Excess spillage will result in a penalty.
12. *No smoking* allowed in hot pits, pre-grid or *any* PIR building.
13. Only one support vehicle allowed in the paddock. Pit and pre-grid roads must remain clear.
14. Noise rule ICSCC 1112 enforced! 103 dB at 50 ft.: *no exceptions!*
15. Oregon State Law requires functioning mufflers to be used at PIR. Functioning mufflers must be capable of reducing sound energy by at least 5dB at trackside. Cars losing mufflers, even if they are still below the sound level, will be black-flagged immediately.
16. Damage to the track, grounds or buildings, regardless of cause, will be charged to the driver responsible. Also, damage to any equipment or devices used by the sanctioning body (ICSCC) or sponsoring club (CSCC) to conduct this race, regardless of cause, will be charged to the driver responsible.
17. Family and crewmembers of drivers are to contact the landline communication person at pre-grid with any questions regarding their driver or car while on track.
18. All entrants for this event shall present at tech inspection an empty, sealable container or containers, marked with the driver's name and license number, capable of holding 2 gallons of liquid. These are to be used to remove all oil, cleaners, brake fluid, etc. from PIR. There will be no drums provided.
19. Anyone caught dumping oil at the raceway will be fined and banned from the raceway. This is a PIR regulation.
20. If entries exceed the number of cars allowed on the track for a particular event, drivers and cars entered as an "additional event" will be restricted from participating, on a first-come, first-served priority based on the date entries were received. This is in order to allow participation by all drivers for whom the event is their primary event, including Novices upgrading to a championship event.
21. NSF checks will be charged an additional \$50 fee.
22. The racing "hot pit" is defined as that area under the control of Hot Pits personnel. This area is located immediately west of the break in the concrete wall half way up the pit lane. Per ICSCC rule #1607, any person over that "pit wall" during practice, qualifying or races shall wear long pants, shirts that cover the shoulders, and shall not be barefoot or wear open-toed shoes. At the one-minute warning, pre-grid becomes a "hot" area. At that time, pre-grid must be cleared of all crew, support personnel and spectators. Notwithstanding the above, ICSCC rule #1607 does not apply to the pre-grid area.
23. All cars that are towed into the paddock area are subject to being dropped off in impound. Drivers must wear all required drivers safety equipment (per ICSCC rule # 1105) before they are allowed to enter the track, while they are on the track, beyond positive protection, under flat tow, or in the hot pits area.
24. The 5-minute warning will be given approximately 8 minutes before the start of the race.
25. Due to recent incidents, extension cords from the pit exit to tech/scales must use a more secure method other than Duct Tape.
26. Staggered start and split start requests shall be submitted to the race steward no later than the end of on-track activity on the day previous to the race.
27. Blendline- the Red Blendline stays on drivers left as you enter the racetrack from the pit area. You are required to stay on the right side until the Red Blend line ends. This is Required Every time you enter the Race Track, other than the race out lap. The Red Blendline stays on the drivers left at the end of the Turn 12 tirewall. If you are to exit the race track at anytime, you are required to stay completely to the right. If you cross the blendline with ONE TIRE you are required to stay out for one more lap unless you are exiting the track after you have received the checkered flag and crossed the start/finish line.

Thank you – Kai Keliikoa, CSCC Race Chairman



## PENALTY BOX

### Race #3—Oregon Raceway Park

#### Saturday Qualifying

Group 2— #471 Dangerous driving, DQ from the weekend, 3-race suspension, loss of Area license, \$250

#### Sunday Races

Group 2— #101 Underweight, DQ  
#173 Pass under yellow, 1 lap penalty, \$100  
Group 5— #309 Pass under yellow, 1 lap penalty, \$50  
and Avoidable contact, DQ, \$100

### Race #4—Oregon Raceway Park

#### Monday Races

Group 1— #108 Underweight, DQ

### Race #5—Portland International Raceway

#### Saturday Qualifying

Group 4— #107 Underweight, DQ  
#91 Did not report to scales, DQ  
Group 1— #731 Underweight, DQ  
#83 Underweight, DQ  
#106 Did not report to scales, DQ  
#350 Avoidable contact, DQ, \$250

#### Sunday Races

Group 2— #2 Pass under yellow, 1 lap penalty, \$100  
Group 5— #755 Pass under yellow, 1 lap penalty, \$50  
Group 1— Protest:

#108 protested #148 for a violation of CR 1517.A Avoidable Contact. Upon review of the evidence, the Stewards agreed and assessed a penalty on #148. #148 was DQ'd, fined \$100, and placed on probation for the rest of the 2011 season.

### Race #6—Mission Raceway Park

#### Saturday Qualifying

Group 1— #715 Over sound limit, loss of fast lap  
Group 9 (special race) — #135 Over sound limit, loss of fast lap

#### Sunday Qualifying

Group 6— #750 Underweight, DQ  
#737 Did not report to scales, DQ  
Group 2— #29 Over sound limit, loss of fast lap

#### Sunday Races

Group 5— #737 Underweight, DQ  
#771 Underweight, DQ  
#747 Underweight, DQ  
#777 Did not report to scales, DQ  
#788 Did not report to scales, DQ  
Group 6— #712 Underweight, DQ





Joe Manke and his fast Chevy

Photo courtesy of Doug Berger/www.dbpics.com

<b>Race Registrars: 2011</b>	<b>Race Chairmen: 2011</b>
<b>CASCADE SPORTS CAR CLUB:</b> Dan Heinrich PO Box 1977 North Plains OR 97133-1977 Tel: 503-647-5399 / Fax: 503-647-5389 Email: racing2132@aol.com	<b>CASCADE SPORTS CAR CLUB:</b> Kai Keliikoa 9009 NE 164th Avenue Vancouver WA 98682 Tel: 360-891-8152 Email: kai@dickhannah.com
<b>INTERNATIONAL RACE DRIVERS CLUB:</b> Debbie Morton 7931 111 Ave NE, Lake Stevens, WA 98258 Tel/Fax: 360-659-7396 (before 9:00 pm) Email: debbiemorton2@msn.com	<b>INTERNATIONAL RACE DRIVERS CLUB:</b> Frank DiMiceli 17042 166th Place SE Renton WA 98058 Cell: 425-785-2376 Email: fdimiceli@comcast.net
<b>NORTHWEST MOTORSPORTS:</b> Rexann Babkirk 5516 N Elgin Street Spokane, WA 99205-6928 Tel: 509-327-8203 Email: registrar@northwestmotorsports.org	<b>NORTHWEST MOTORSPORTS:</b> Doug Smith 15221 N Shady Slope Road Spokane WA 99208 Tel: 509-466-4612 / Fax: 509-467-9826 Email: dougsmith66@hotmail.com
<b>SPORTS CAR CLUB OF B.C.:</b> Rob Gilchrist 2370 Center Street Abbotsford BC V2T 2N3 Canada Tel: 604-857-2492 Email: registrar@sccbc.net	<b>SPORTS CAR CLUB OF B.C.:</b> Irene Chambers 8361 Melburn Court Mission BC V2V 7B3 Canada Tel: 604-854-5797 Email: gikdf@telus.net
<b>TEAM CONTINENTAL:</b> Linda Blackburn 2600 NE Minnehaha Street C39 Vancouver, WA 98665 Tel/Fax: 360-258-6812 (before 8:00 pm) Email: lindabebad@hotmail.com	<b>TEAM CONTINENTAL:</b> Bob Smethers 16286 SW Blanton Street Beaverton OR 97007 Tel: 971-207-5147 (before 9:00 pm) racechair@teamcontinental.com



**Sports Car Club of British Columbia presents  
Labour Daze Classic  
September 3, 4 & 5, 2011**



Featuring  
the 'Westcoast Sportscar Championship'

This event is sanctioned by ICSCC as a championship points race conducted under the 2011 ICSCC regulations and organized by the Sports Car Club of British Columbia at Mission Raceway Park Road Course in Mission, BC. This is a double race weekend with points being awarded on Sunday and Monday. All entries are through MotorsportReg.com

**Entries Close: August 28<sup>th</sup>, 2011**

<b>Entry Fees:</b>	ICSCC and others: Sat/Sun/Mon	\$385.00 CDN/US
	Additional Group: Sat/Sun/Mon	\$195.00 CDN/US
	ICSCC and others: Sat/Sun only	\$280.00 CDN/US
	Additional Entry: Sat/Sun only	\$125.00 CDN/US
	WSC (includes \$50 prize fund fee)	\$280.00 CDN/US
	WSC & ICSCC Combo: 3 days	\$475.00 CDN/US
	WSC & ICSCC Combo: 2 days	\$420.00 CDN/US
	ICSCC and others: Mon only	\$195.00 CDN/US
	Additional Entry: Mon only	\$110.00 CDN/US
	Novice: 1 day (Sat or Sun)	\$155.00 CDN/US
	Novice: 2 days (Sat & Sun)	\$225.00 CDN/US
	Late Entry	\$ 50.00 CDN/US
	Pit Passes (5 free with entry)	\$ 5.00 CDN/US

**Transponders:** Weekend rental at track \$80.00 CDN/US for 2 days or \$35.00 CDN/USD for 1 day

**Friday Practice:** There will be a Friday Practice put on by the RDC. Please register in advance through MotorsportReg.com

ALL PRICES INCLUDE 12% HST  
Please make cheques payable to SCCBC

**Paved Paddock Spaces:** Paddock reservations are made with your registration on MotorsportReg.com. Please indicate your 1<sup>st</sup>, 2<sup>nd</sup> and 3<sup>rd</sup> choices. They will be assigned in the order the entries are received. If your entry is late or you do not indicate your choices, your pit assignment will be determined at registration from any remaining. The back row will be allocated to pre-approved trailers first.

**Registration Enquiries:** SCCBC Registrar  
Perry Afaganis

Phone: (778) 593-1635 (**No calls after 8pm please**)  
Email: [registrar@scbc.net](mailto:registrar@scbc.net) if you have any questions

**Registration Hours:**

Friday	5:30 pm - 7:30 pm (Tech to 7:30)
Saturday	7:00 am - 11:00 am
Sunday	7:00 am - 10:00 am

- Notes:**
- 1) There are recycling containers for waste fluids in the tech area and garbage bin along the back road of the paddock. Please do your part to clean up.
  - 2) Consumption of Alcoholic Beverages is **NOT PERMITTED** during an event.
  - 3) Weekend schedule and Supplemental Regulations will be available at Registration.

**Class Rotations #3 & 4**

GROUP 1	A-B-C-D Prod, SPU, SPM, SPO, PRO3	GROUP 7	Novice Closed Wheel
GROUP 2	E-F-G-H-I-J Prod, CR, PRO7, SM, CSM, HC4, ITX	GROUP 9	WSC - P1, P2, P3, P4
GROUP 3	CF, FF, FA, FC, FM		
GROUP 4	GT1-2-3, AS, ITE, RS, ST		
GROUP 5	GTL, ITA-B-C-S, E-F-G-H Imp Prod		
GROUP 6	FL, FV, FFF/500, A-B-C-D-E-FSR, S2, Novice Open Wheel		

SCCBC Race Chairs: Irene Chambers and Dave Nex  
This announcement forms part of the Supplementary Regulations





**SPORTS CAR CLUB OF BRITISH COLUMBIA**  
Presents  
**Labour Daze Classic**  
**September 3, 4 & 5, 2011**



**Friday:** Registration from 5:30 to 7:30PM. Main Gate Closed at 10:30PM

**Saturday:**

7:00	Main Gate Opens - Registration & Tech Opens			
8:00	Mandatory Novice Track tour with License Director - Meet in Hot Pits			
8:30	Novice Drivers' meeting with License Director Pit #1			
9:00	- 9:15	GROUP 3	PRACTICE	15 min
9:20	- 9:35	GROUP 4	PRACTICE	15 min
9:45	- 10:00	GROUP 5	PRACTICE	15 min
10:05	- 10:20	GROUP 6 & Novice Open Wheel	PRACTICE	15 min
10:25	- 10:40	GROUP 7 - Novice Closed Wheel	PRACTICE	15 min
10:50	- 11:05	GROUP 1	PRACTICE	15 min
11:00	Registration Closed			
11:15	- 11:30	GROUP 2	PRACTICE	15 min
11:40	- 11:55	GROUP 9	PRACTICE	15 min
11:55	- 1:00	Lunch		
12:10	Drivers Meeting @ Tech			
1:00	- 1:15	GROUP 7 - Novice Closed Wheel	QUALIFYING	15 min
1:25	- 1:50	GROUP 5	QUALIFYING	15 min
1:55	- 2:10	GROUP 6 & Novice Open Wheel	QUALIFYING	15 min
2:15	- 2:30	GROUP 1	QUALIFYING	15 min
2:30	Novice Drivers' meeting with License Director Pit #1			
2:35	- 2:50	GROUP 2	QUALIFYING	15 min
3:00	- 3:15	GROUP 3	QUALIFYING	15 min
3:20	- 3:35	GROUP 4	QUALIFYING	15 min
3:40	- 4:10	GROUP 7 NOVICE CLOSED WHEEL	RACE	30 min
4:15	- 4:30	GROUP 9	QUALIFYING	15 min
10:30PM	MAIN GATE CLOSED AND LOCKED - OPENS AT 7:00AM			

**Sunday:**

**NOTE: PLEASE DO NOT BLOCK PAVED LANES WHILE LOADING TRAILERS**

7:00	Main Gate Opens - Registration & Tech Open			
7:30	Mandatory Novice Track tour with License Director - Meet in Hot Pits			
8:00	Novice Drivers' meeting with License Director Pit #1			
8:30	- 8:45	GROUP 3	QUALIFYING	15 min
8:55	- 9:10	GROUP 4	QUALIFYING	15 min
9:15	- 9:30	GROUP 5	QUALIFYING	15 min
9:35	- 9:50	GROUP 6 & Novice Open Wheel	QUALIFYING	15 min
10:00	- 10:15	GROUP 1	QUALIFYING	15 min
10:00	Registration Closed			
10:20	- 10:35	GROUP 2	QUALIFYING	15 min
10:45	- 11:00	GROUP 7 - Novice Closed Wheel	PRACTICE	15 min
11:05	- 11:20	GROUP 9	QUALIFYING	15 min
11:20	- 12:10	Lunch		
11:35	Drivers Meeting @ Tech			
12:10	- 12:25	GROUP 7 - Novice Closed Wheel	QUALIFYING	15 min
12:30	- 1:00	GROUP 3	RACE	30 min
1:10	- 1:40	GROUP 4	RACE	30 min
1:50	- 2:20	GROUP 5	RACE	30 min
2:30	- 3:00	GROUP 6 & Novice Open Wheel	RACE	30 min
3:00	Novice Drivers' meeting with License Director Pit #1			
3:10	- 3:40	GROUP 1	RACE	30 min
3:50	- 4:20	GROUP 2	RACE	30 min
4:30	- 5:00	GROUP 7 - Novice Closed Wheel	RACE	30 min
5:10	- 6:00	GROUP 9	RACE	50 min

GROUP 1: A-B-C-D Prod, SPU, SPM, SPO, PRO3

GROUP 2: E-F-G-H-I-J Prod, CR, PRO7, SM, CSM, HC4, ITX

GROUP 3: CF, FF, FA, FC, FM

GROUP 4: GT1-2-3, AS, ITE, RS, ST

GROUP 5: GTL, ITA-B-C-S, E-F-G-H Imp Prod

GROUP 6: FL, FV, FFF/500, A-B-C-D-E-FSR, S2, Novice Open Wheel

GROUP 7: Novice Closed Wheel

GROUP 9: WSC - P1, P2, P3, P4

*\*The five minute warning will be given no earlier than eight minutes before the scheduled race start*



# SPORTS CAR CLUB OF BRITISH COLUMBIA

Presents

## Labour Daze Classic September 3, 4 & 5, 2011



Schedule Continued...

Monday:

Main Gate Opens - Registration & Tech Open				
7:00				
9:00	-	9:15	GROUP 4	QUALIFYING 15 min
9:20	-	9:35	GROUP 5	QUALIFYING 15 min
9:45	-	10:00	GROUP 6 & Novice Open Wheel	QUALIFYING 15 min
10:00	Registration Closed			
10:05	-	10:20	GROUP 1	QUALIFYING 15 min
10:30	-	10:45	GROUP 2	QUALIFYING 15 min
10:50	-	11:05	GROUP 3	QUALIFYING 15 min
11:05	-	12:05	Lunch	
11:20	Drivers Meeting @ Tech			
12:05	-	12:35	GROUP 4	RACE 30 min
12:45	-	1:15	GROUP 5	RACE 30 min
1:25	-	1:55	GROUP 6 & Novice Open Wheel	RACE 30 min
2:05	-	2:35	GROUP 1	RACE 30 min
2:45	-	3:15	GROUP 2	RACE 30 min
3:25	-	3:55	GROUP 3	RACE 30 min

GROUP 1: A-B-CD Prod, SPU, SPM, SPO, PRO3

GROUP 5: GTL, ITA-B-C-S, E-F-G-H Imp Prod

GROUP 2: E-F-G-H+JProd, CR, PRO7, SM, CSM, HC4, ITX

GROUP 6: FL, FV, FFF/500, A-B-C-D-E-FSR, S2, Novice Open Wheel

GROUP 3: CF, FF, FA, FC, FM

GROUP 4: GT1-23, AS, ITE, RS, ST

*\*The five minute warning will be given no earlier than eight minutes before the scheduled race start*

**ALL TIMES ARE SUBJECT TO CHANGE AT ORGANIZER'S DISCRETION**

SOCBC Race Chairs: Irene Chambers and Dave Nex  
*This schedule forms part of the Supplemental Regulations*

# 2011 ICSCC Event Schedule

"Rotn" is race group rotation: For example, in "rotn 2," Group 2 is first on the weekend's schedule.

<u>Date</u>	<u>Event</u>	<u>Club</u>	<u>Location</u>
January 8	ICSCC Spring Meeting	All	SeaTac Marriott
February 26	RATS Meeting	All	Best Western Peppertree, Auburn
March 19	Driver Training	CSCC	Portland Intl Raceway
March 25	Track Day	IRDC	Bremerton Motorsports Park
March 26/27	Driver Training	VMSC	Western
March 26/27	Driver Training	SCCBC	River's Edge, Mission
April 2/3	Driver Training	NWMS	Oregon Raceway Park, Grass Valley
April 9	Driver Training	IRDC	Pacific Raceways, Kent
April 10	Enduro (4 hours)	IRDC	Pacific Raceways, Kent
April 29	Driver Training	CSCC	Portland Intl Raceway
<b>April 30 / May 1</b>	<b>Race #1 (rotn 4)</b>	<b>CSCC</b>	Portland Intl Raceway
May 14	Driver Training	CSCC	Portland Intl Raceway
May 20	Test and Tune	IRDC	Pacific Raceways, Kent
<b>May 21/22</b>	<b>Race #2 (rotn 5)</b>	<b>IRDC</b>	Pacific Raceways, Kent
May 27	Driver Training	TC	Oregon Raceway Park, Grass Valley
<b>May 28-30</b>	<b>Race #3/4 (rotn 6/1) [double race]</b>	<b>TC</b>	Oregon Raceway Park, Grass Valley
June 10	Driver Training	CSCC	Portland Intl Raceway
<b>June 11/12</b>	<b>Race #5 (rotn 2)</b>	<b>CSCC</b>	Portland Intl Raceway
June 17	Test and Tune	SCCBC	River's Edge, Mission
<b>June 18/19</b>	<b>Race #6 (rotn 3)</b>	<b>SCCBC</b>	River's Edge, Mission
July 10	Driver Training	IRDC	Pacific Raceways, Kent
July 14	Test and Tune	NWMS	Spokane County Raceway
<b>July 15-17</b>	<b>Race #7/8/9 (rotn 4/5/6) [triple race]</b>	<b>NWMS</b>	Spokane County Raceway
July 16/17	Driver Training	SCCBC	River's Edge, Mission
July 21-23	Driver Training	VMSC	Western
July 29	Test and Tune	IRDC	Pacific Raceways, Kent
<b>July 30/31</b>	<b>Race #10 (rotn 1)</b>	<b>IRDC</b>	Pacific Raceways, Kent
August 12	Driver Training	CSCC	Portland Intl Raceway
<b>August 13/14</b>	<b>Race #11 (rotn 2)</b>	<b>CSCC</b>	Portland Intl Raceway
September 2	Test and Tune	SCCBC	River's Edge, Mission
<b>September 3-5</b>	<b>Race #12/13 (rotn 3/4) [double race]</b>	<b>SCCBC</b>	River's Edge, Mission
September 16	Driver Training	TC	Oregon Raceway Park, Grass Valley
<b>September 17/18</b>	<b>Race #14 (rotn 5)</b>	<b>TC</b>	Oregon Raceway Park, Grass Valley
September 23	Test and Tune	IRDC	Pacific Raceways, Kent
<b>September 24/25</b>	<b>Race #15 (rotn 6)</b>	<b>IRDC</b>	Pacific Raceways, Kent
October 15	Enduro (8 hours)	CSCC	Portland Intl Raceway
October 29	Track Day	IRDC	Bremerton Motorsports Park
November 12	ICSCC Banquet	All	SeaTac Marriott
November 12/13	ICSCC Fall Meeting	All	SeaTac Marriott

# 8 36th ANNUAL HOURS OF THE CASCADES

presented by  
CASCADE SPORTS CAR CLUB



Daytime LeMans Start  
Nighttime Finish



#### Seven Classes including:

- Limited classes to encourage participation of cars not ordinarily prepared for endurance racing, and
- A class for Sportsracers!

#### New for 2011 - A "Pit Crew Challenge"

For more information visit:  
[www.cascadesportscarclub.org](http://www.cascadesportscarclub.org)

Photos courtesy of Doug Berger



**Saturday, October 15th, 2011 @ Portland International Raceway**



# ICSCC RACE ENTRY FORM



Please type or print Complete all information and sign entry

c ICSCC 1-15-11

DO NOT WRITE IN THIS SPACE	DO NOT WRITE IN THIS SPACE	DO NOT WRITE IN THIS SPACE
CAR # _____	CLASS _____	GROUP # _____
Amount prepaid _____		Total amount due _____
Amount paid at track _____	Cash _____	Check # _____
Cr. Card # _____		

Drivers Name:		Address:	
City:	State/Prov	Zip/Postal Code	Best Contact # - Area Code & Phone Number
Email address:		Cell Phone:	
In case of Emergency Notify:		At track? <input type="checkbox"/> Yes <input type="checkbox"/> No	Relationship:
Phone:			
ICSCC Car #	Competition License Type		Club Affiliation
<input type="checkbox"/> ICSCC	<input type="checkbox"/> CACC		Preferred NON-ICSCC CAR# (Must be a 700 Series #)
<input type="checkbox"/> SCCA	<input type="checkbox"/> Other _____		
1st Race Group	Class	2nd Race Group	Class
		Car # if different	TRANSPONDER # (Mandatory)
		(if renting - fill out rental form & fax)	
Number of Races Entered	Car Make:	Model	Color

Sponsors:	
Name of Event	1st Entry Fee
Date of Event	2nd Entry Fee
Sponsoring Club	Worker Fund Donation
<b>Note: IF DOUBLE RACE, FILL OUT FORM FOR EACH RACE DAY</b>	Transponder Rental
	Passes or Late Fee
	Amount enclosed
	Amount-Pay at Track
<b>Note: FEE SECTION MUST BE FILLED OUT</b>	

**Crew: First 5, list additional on back**

1 \_\_\_\_\_

2 \_\_\_\_\_

3 \_\_\_\_\_

4 \_\_\_\_\_

4 \_\_\_\_\_

5 \_\_\_\_\_

Group 1	<input type="checkbox"/> A Prod	<input type="checkbox"/> B Prod	<input type="checkbox"/> C Prod	<input type="checkbox"/> D Prod	<input type="checkbox"/> SPU	<input type="checkbox"/> SPO	<input type="checkbox"/> SPM	<input type="checkbox"/> Pro-3
Group 2	<input type="checkbox"/> E Prod	<input type="checkbox"/> F Prod	<input type="checkbox"/> G Prod	<input type="checkbox"/> H Prod	<input type="checkbox"/> I Prod	<input type="checkbox"/> J Prod	<input type="checkbox"/> CR	<input type="checkbox"/> Pro-7
Group 3	<input type="checkbox"/> CF	<input type="checkbox"/> FF	<input type="checkbox"/> FA	<input type="checkbox"/> FM	<input type="checkbox"/> FC			
Group 4	<input type="checkbox"/> GT-1	<input type="checkbox"/> GT-2	<input type="checkbox"/> GT-3	<input type="checkbox"/> AS	<input type="checkbox"/> ITE	<input type="checkbox"/> RS	<input type="checkbox"/> ST	
Group 5	<input type="checkbox"/> ITA	<input type="checkbox"/> ITB	<input type="checkbox"/> ITC	<input type="checkbox"/> ITS	<input type="checkbox"/> GTL	<input type="checkbox"/> EIP	<input type="checkbox"/> FIP	<input type="checkbox"/> HIP
Group 6	<input type="checkbox"/> FV	<input type="checkbox"/> FFF/500	<input type="checkbox"/> S-2	<input type="checkbox"/> ASR	<input type="checkbox"/> BSR	<input type="checkbox"/> CSR	<input type="checkbox"/> DSR	<input type="checkbox"/> ESR
Group 7	<input type="checkbox"/> Novice Closed Wheel							

Failure to submit **completed, signed and legible forms** will constitute a late entry and late entry fee will be assessed. See Com. Regs. For details

The undersigned represents and affirms to the sponsoring club, as well as the ICSCC, that the undersigned has reviewed and agrees to compete under the current ICSCC competition regulations and any supplementary regulations which may be issued by a sponsoring club pertaining to this event. The undersigned further certifies that the car's equipment complies with current ICSCC competition regulations. The undersigned certifies that the undersigned has read the race announcement and holds a competition license authorizing the undersigned's participation in this race event. The undersigned releases unto ICSCC and the sponsoring club the rights to use the undersigned's name and images of both the undersigned and the undersigned's automobile for promotional purposes as deemed fit by the ICSCC and/or the sponsoring club.

ENTRANT'S LEGAL SIGNATURE: \_\_\_\_\_ DATE: \_\_\_\_\_



# Memo Submission Schedule 2011

Deadline	Issue	Content
07/27/11	#7 August	Race Announcement: TC #14 Race Announcement: IRDC #15 Race Announcement: CSCC Enduro
09/12/11	#8 September	Rule Change Proposals Banquet Announcement #1
10/05/11	#9 Oct / Nov	Banquet Announcement #2
11/28/11	#10 Dec / Jan	Final Approved Rule Changes  2012 License Application & Med Invite to Bid Memo

## Rainbow Action Imagery has photos of your car... see them on the internet!

At our website you can see all the photos from an event in one place, pick the ones you like, and order them online. To see your photos:

Go to **www.dotphoto.com**; enter username **gerryf** and password **rainbow**; pick a photo gallery to view.

From there, follow directions for ordering online or contact Gerry or Sue for further info, at 604-734-4721 or gerryf@telus.net.

I'm on a gin & tonic diet—so far I've lost two days.

### Memo Commercial Advertising Rates:

Full page \$80 / issue full year, or \$110 / issue  
1/2 page \$50 / issue full year, or \$70 / issue  
1/4 page \$30 / issue full year, or \$40 / issue  
1/8 page \$20 / issue full year, or \$25 / issue

Commercial classified \$10/issue full year  
or \$12/issue

## Classified Ads

### RACECAR FOR SALE

1993 ACURA INTEGRA #94, 1.8L motor – balanced, 5 speed transmission, 2 sets of 14"x7" wheels, 2 sets of new tires – Toyos & Hoosiers, new brakes, rotors, pads, fluid, backup rotors & pads, chassis cross balanced, front strut bar, New fuel cell & fuel pumps, New axles, Koni adjustable shocks, all new suspension bushings, fire extinguisher, shop manual, passenger seat with 5 point belts, car cover, very well maintained car, very reliable, no DNF's, previous class wins in ITA & H4. \$6,000

Dual axle trailer with new brakes & tires also available

Jeff Penick 503-701-6648 - cell

5/11

### RACE CAR FOR SALE

1983 RX-7 with ICSCC log book. Autopower bolt-in roll cage, Kirkey seat, G-Force harness, removable steering wheel, adjustable camber plates, coil overs with Eibach Ground Control springs, front strut tower bar, upgraded front sway bar, headers with custom exhaust, runs great.

Great entry-level turn-key car! \$2,500 OBO.

Call David at 503-349-3662.

6/11

### Memo Classified Ad Policies:

Non-commercial ads are free to Conference licensed drivers, officials, and workers.

**Maximum ad length 100 words: Longer ads not accepted.**

To place an ad in the Memo, contact the Memo editor at memo@icscc.com. Proof your ad when it first appears – it is presumed correct unless the editor is notified in writing.

Ads run for 3 issues then are automatically cancelled unless renewed. Numbers at the end of the ad show when it began: 1/11 means first issue of 2011; that ad will expire after issue #3 of 2011 (3/11). There are 10 issues per year.

**To change an ad, please rewrite it and submit the new wording in its entirety.**



# ICSCC RACE ENTRY FORM



Please type or print Complete all information and sign entry

c ICSCC 1-15-11

DO NOT WRITE IN THIS SPACE	DO NOT WRITE IN THIS SPACE	DO NOT WRITE IN THIS SPACE
CAR # _____	CLASS _____	GROUP # _____
Amount prepaid _____		Total amount due _____
Amount paid at track _____	Cash _____	Check # _____ Cr. Card # _____

Drivers Name: _____		Address: _____	
City: _____	State/Prov _____	Zip/Postal Code _____	Best Contact # - Area Code & Phone Number _____
Email address: _____			Cell Phone: _____

In case of Emergency Notify: _____		At track? <input type="checkbox"/> Yes <input type="checkbox"/> No	Relationship: _____	Phone: _____
ICSCC Car # _____	Competition License Type <input type="checkbox"/> ICSCC <input type="checkbox"/> CACC <input type="checkbox"/> SCCA <input type="checkbox"/> Other _____		Club Affiliation _____	Preferred NON-ICSCC CAR# _____ <small>(Must be a 700 Series #)</small>

1st Race Group _____	Class _____	2nd Race Group _____	Class _____	Car # if different _____	TRANSPONDER # (Mandatory) <small>(if renting - fill out rental form &amp; fax)</small>
Number of Races Entered _____	Car Make: _____	Model _____	Color _____		

Sponsors: _____	
Name of Event _____	1st Entry Fee _____
Date of Event _____	2nd Entry Fee _____
Sponsoring Club _____	Worker Fund Donation _____
<b>Note: IF DOUBLE RACE, FILL OUT FORM FOR EACH RACE DAY</b>	Transponder Rental _____
	Passes or Late Fee _____
	Amount enclosed _____
<b>Note: FEE SECTION MUST BE FILLED OUT</b>	Amount-Pay at Track _____

Group 1	<input type="checkbox"/> A Prod	<input type="checkbox"/> B Prod	<input type="checkbox"/> C Prod	<input type="checkbox"/> D Prod	<input type="checkbox"/> SPU	<input type="checkbox"/> SPO	<input type="checkbox"/> SPM	<input type="checkbox"/> Pro-3				
Group 2	<input type="checkbox"/> E Prod	<input type="checkbox"/> F Prod	<input type="checkbox"/> G Prod	<input type="checkbox"/> H Prod	<input type="checkbox"/> I Prod	<input type="checkbox"/> J Prod	<input type="checkbox"/> CR	<input type="checkbox"/> Pro-7	<input type="checkbox"/> SM	<input type="checkbox"/> CSM	<input type="checkbox"/> H-4	<input type="checkbox"/> ITX
Group 3	<input type="checkbox"/> CF	<input type="checkbox"/> FF	<input type="checkbox"/> FA	<input type="checkbox"/> FM	<input type="checkbox"/> FC							
Group 4	<input type="checkbox"/> GT-1	<input type="checkbox"/> GT-2	<input type="checkbox"/> GT-3	<input type="checkbox"/> AS	<input type="checkbox"/> ITE	<input type="checkbox"/> RS	<input type="checkbox"/> ST					
Group 5	<input type="checkbox"/> ITA	<input type="checkbox"/> ITB	<input type="checkbox"/> ITC	<input type="checkbox"/> ITS	<input type="checkbox"/> GTL	<input type="checkbox"/> EIP	<input type="checkbox"/> FIP	<input type="checkbox"/> HIP				
Group 6	<input type="checkbox"/> FV	<input type="checkbox"/> FFF/500	<input type="checkbox"/> S-2	<input type="checkbox"/> ASR	<input type="checkbox"/> BSR	<input type="checkbox"/> CSR	<input type="checkbox"/> DSR	<input type="checkbox"/> ESR	<input type="checkbox"/> FSR	<input type="checkbox"/> FL	<input type="checkbox"/> NOW	
Group 7	<input type="checkbox"/> Novice Closed Wheel											

Failure to submit **completed, signed and legible forms** will constitute a late entry and late entry fee will be assessed. See Com. Regs. For details

The undersigned represents and affirms to the sponsoring club, as well as the ICSCC, that the undersigned has reviewed and agrees to compete under the current ICSCC competition regulations and any supplementary regulations which may be issued by a sponsoring club pertaining to this event. The undersigned further certifies that the car's equipment complies with current ICSCC competition regulations. The undersigned certifies that the undersigned has read the race announcement and holds a competition license authorizing the undersigned's participation in this race event. The undersigned releases unto ICSCC and the sponsoring club the rights to use the undersigned's name and images of both the undersigned and the undersigned's automobile for promotional purposes as deemed fit by the ICSCC and/or the sponsoring club.

ENTRANT'S LEGAL SIGNATURE: \_\_\_\_\_ DATE: \_\_\_\_\_



## Memo #6 July 2011

13702 SW Hall Blvd #4  
Tigard OR 97223

Return Service Requested

Printed in the USA

## New for 2011 delivered right to the track exclusively for you

**RePlay Camera** – this all aluminum camera is about the size of a lipstick case and only has two buttons: Start and Stop. The batteries are internal and the recording is done on a micro SD card included in the price. You'll want to come by and see this amazing little camera that will record hours on one battery charge. Only \$225.00



**Back in stock** – Formula V Traction Treatment a product that has been saving racers money for over 25 years by extending your tire life. Formula V returns old hard tires to at or near their original durometer reading so that you can run your race tires until they wear out with nearly the same performance as new tires. Check out the tests on the web this is the product during a year when budgets may be thin.



**Complete CD recording from our 16th annual High Performance Racing Seminar** featuring Ex Formula 1 Driver turned driving instructor Allen Berg, Executive Director of the Snell Memorial Foundation Ed Becker, Former World Wide Director of Goodyear Racing Tires, Leo Mehl, Race car engineer Neil Roberts from Swift Engineering, and Rick Gold President and fuel designer for ERC Racing Fuel. Come by and hear excerpts before you buy.



**The best racing T-shirts anywhere in the USA** including the Enduro Cartoon shirt and the definition of the flags that is so funny you'll wear it to work to get old sour puss...er your boss to laugh.



Ask for our **Free Report: How to Buy Exceptional Safety Equipment to Be Safe, Look Professional, and be Comfortable When You Go Racing.**

"Your supply of the most obscure parts has saved my race weekend on several occasions. Thanks for supporting the racing community." **Ken Olson** – *Shelby Cobra* • "The friendly, helpful, usually-has-what-you-need supplier." **Don Thiemann** – *Mustang* • "Andy and Armadillo Racing set the standard for customer service by which any racer support business should be measured." **Frank DiMiceli** – *Mazda Miata*



On Track With All Your Racing Needs • 1-888-211-9129 • Toll Free USA and Canada • [www.armadilloracing.com](http://www.armadilloracing.com)